



2024

Florida Transit Information and Performance Handbook

Table of Contents

3	Public Transit in Florida Overview The Mission
4	FDOT Pubic Transit Office Transit Planning and Commuter Assistance Grant Administration Transit Operations and Safety
5	Florida Transit Systems
6	Florida’s Urban Fixed-Route Transit System Summaries
39	Florida Transit System Summary 2022 & 2023 General Information Service Supplied Service Usage and Quality of Service Cost Efficiency Cost Effectiveness Service Effectiveness
45	Florida Transit Systems’ Fixed-Route Fares
46	Glossary of Terms
50	FDOT District Offices Modal Development (OMD)



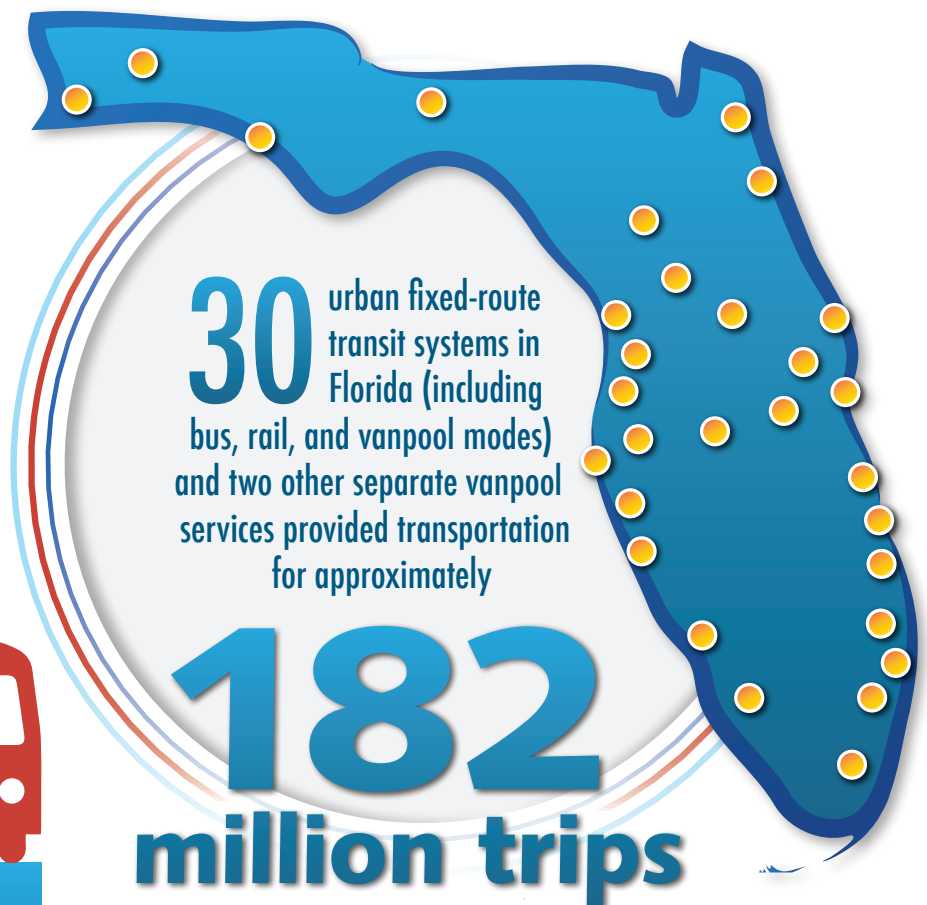
This Handbook offers a general overview of performance measures of public transit in the State of Florida and provides supplementary information to support the requirements of F.S. 341.071. The information in the following pages provides insight into transit’s contribution to meeting the statewide transportation objectives and mission of the Florida Department of Transportation (FDOT).

This Handbook provides a synopsis of FDOT’s transit resources, a profile of Florida’s transit systems, and a snapshot of their performance in Federal Fiscal Year 2023. Although there are rural and urban transit systems in Florida, the focus of this handbook is on Florida’s urban fixed-route transit systems.

In partnership with public transportation providers statewide, the FDOT Public Transit Office implements the FDOT vision to serve the people of Florida by providing a transportation network that is well planned, supports economic growth, and has the goal of being congestion and fatality free.

FDOT Mission

To contribute to a safe statewide transportation system that promotes the efficient movement of people and goods, supports the state’s economic competitiveness, prioritizes Florida’s environment and natural resources, and preserves the quality of life and connectedness of the state’s communities.



FDOT Public Transit Office

The FDOT Transit Office consists of three sections (Transit Planning and Commuter Assistance; Grants Administration; Transit Operations and Safety), each of which has specific areas of responsibility.

Transit Planning and Commuter Assistance

The Transit Planning and Commuter Assistance unit is responsible for statewide transit planning, legislative, and policy analysis, developing and monitoring the implementation of state transit development planning (TDP) rules and guidelines, performance monitoring, transit information systems, transit facilities planning, technical assistance, research and workforce development. Some of the programs and activities implemented and managed by the Transit Planning and Commuter Assistance unit in fulfillment of these responsibilities are:

Development and support of the Florida Transit Information System (FTIS), Transit Boardings Estimation and Simulation Tool (TBEST), and the Florida Transit Planning Network (FTPN); provision of training for application of ADA standards to transit facilities; and the rural vanpool program.

Grants Administration

The Grants Administration unit administers federal and state transit grants, monitors compliance with transit regulations, Title VI, and provides planning, procurement assistance and technical assistance to Florida's transit agencies and communities.

Transit Operations and Safety

The Transit Operations and Safety Section provides technical support to Florida transit systems for the acquisition of transit vehicles, mechanic and technician training, and leasing of equipment and safety programs for bus and fixed guideways. Some of the programs administered by the Transit Operations and Safety Section include the Florida Transit Safety and Operations Network (FTSON) and the Transit Research Inspection Procurement Services (TRIPS) program.

Additional information about FDOT transit resources can be found on these websites:

[FDOT Transit Office](#)

[Florida Transit Planning Network](#)

[Transit Research Inspection Procurement Services \(TRIPS\)](#)

[Substance Abuse Management](#)

[Florida Transit Safety and Operations Network \(FTSON\)](#)

[Commuter Assistance Program](#)

[Transit Boardings Estimation and Simulation Tool \(TBEST\)](#)

[Florida Transit Information System \(FTIS\)](#)



Florida's Transit Systems



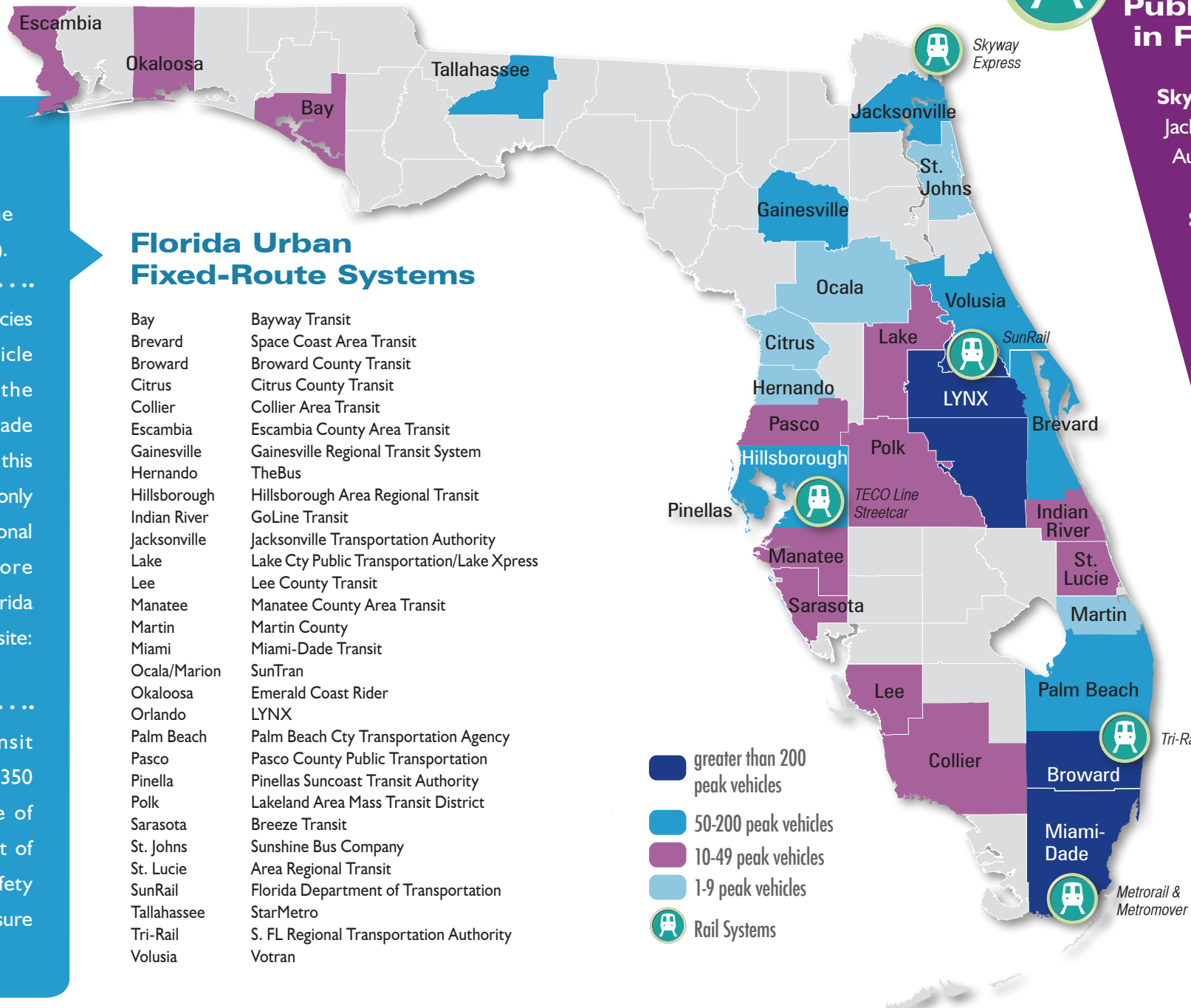
In 2023, there were 30 urban fixed-route systems operating in Florida that reported to the National Transit Database (NTD).

During 2023, Florida's transit agencies ranged in size from the 4-vehicle system in Citrus County to the 958-vehicle system in Miami-Dade County. The systems included in this edition of the Handbook represent only those that reported to the National Transit Database in 2023. More information on public transit in Florida can be found at the following website: www.fdot.gov/transit.

In 2023, Florida's urban transit systems collectively traveled 355,350 miles between the occurrence of safety incidents. Twenty percent of the agencies improved their safety performance based on this measure from 2022 to 2023.

Florida Urban Fixed-Route Systems

Bay	Bayway Transit
Brevard	Space Coast Area Transit
Broward	Broward County Transit
Citrus	Citrus County Transit
Collier	Collier Area Transit
Escambia	Escambia County Area Transit
Gainesville	Gainesville Regional Transit System
Hernando	TheBus
Hillsborough	Hillsborough Area Regional Transit
Indian River	GoLine Transit
Jacksonville	Jacksonville Transportation Authority
Lake	Lake Cty Public Transportation/Lake Xpress
Lee	Lee County Transit
Manatee	Manatee County Area Transit
Martin	Martin County
Miami	Miami-Dade Transit
Ocala/Marion	SunTran
Okaloosa	Emerald Coast Rider
Orlando	LYNX
Palm Beach	Palm Beach Cty Transportation Agency
Pasco	Pasco County Public Transportation
Pinella	Pinellas Suncoast Transit Authority
Polk	Lakeland Area Mass Transit District
Sarasota	Breeze Transit
St. Johns	Sunshine Bus Company
St. Lucie	Area Regional Transit
SunRail	Florida Department of Transportation
Tallahassee	StarMetro
Tri-Rail	S. FL Regional Transportation Authority
Volusia	Votran



- greater than 200 peak vehicles
- 50-200 peak vehicles
- 10-49 peak vehicles
- 1-9 peak vehicles
- Rail Systems



Public Rail Systems in Florida

Skyway Express
Jacksonville Transportation Authority

SunRail
Florida Commuter Rail Authority, Florida Dept. of Transportation

TECO Line Streetcar
Hillsborough Area Regional Transit Authority

Tri-Rail
The South Florida Regional Transportation Authority

Metrail & Metromover
Miami-Dade Transit operates a heavy rail system



Florida's Urban Fixed-Route Transit System Summaries

2022 and 2023 Statewide Totals

FDOT Public Transit Office
605 Suwannee St., Mail Station 26, Tallahassee, FL 32399-0450
(850) 414-4500
www.fdot.gov/Transit



In 2023, 30 fixed-route transit systems in Florida reported ridership and other data. In addition, five systems operate at least one rail mode. The data* shown below and on the following pages represent fixed-route bus, rail services, and vanpool services only (excludes demand-response service) for 2022 and 2023 from the National Transit Database. The data shown below represent closed-out, validated numbers as of September 2024. However, it is possible that some figures may be updated in the subsequent reporting year. The Covid-19 pandemic continued to significantly affect transit ridership in the state during FY 2022. Please see page 4 of this Handbook for more information on Florida's transit systems.

These totals include vanpool services provided by TBARTA and FDOT District One, except for Route Miles and Resident Access to Transit, which exclude all systems' vanpool data. Passenger Trips per Employee FTE excludes purchased transportation data.

		2022	2023
GENERAL INFORMATION	Service Area Population	19,142,090	18,926,890
	Service Area Population Density	1,008.1	999.5
	Operating Expense	\$1,557,216,283	\$1,734,877,153
	Operating Revenue	\$228,839,606	\$308,990,267
SERVICE SUPPLIED	Total Annual Revenue Miles	138,426,126	139,297,014
	Total Annual Revenue Hours	9,464,811	9,330,197
	Total Revenue Vehicles	4,276	4,106
	Peak Vehicles	3,178	3,147
	Route Miles	15,839.8	17,480.5
SERVICE USAGE	Annual Passenger Trips	149,057,165	181,794,611
	Annual Passenger Miles	835,677,115	1,032,699,445
	Average Trip Length	5.6	5.7
QUALITY OF SERVICE	Resident Access to Transit**	62.43%	60.15%
	Weekday Span of Service (hours)	17.94	18.03
COST EFFICIENCY	Operating Expense per Revenue Mile	\$11.25	\$12.45
	Operating Expense per Revenue Hour	\$164.53	\$185.94
	Operating Revenue per Operating Expense	14.70%	17.81%
	Passenger Trips per Employee FTE	15,240	17,437
COST EFFECTIVENESS	Operating Expense per Passenger Trip	\$10.45	\$9.54
	Operating Expense per Passenger Mile	\$1.84	\$1.67
	Operating Expense per Capita	\$81.35	\$91.66
	Farebox Recovery Ratio	11.32%	11.41%
	Average Fare	\$1.18	\$1.09
SERVICE EFFECTIVENESS	Passenger Trips per Revenue Mile	1.08	1.31
	Passenger Trips per Revenue Hour	15.75	19.48
	Passenger Trips per Capita	7.79	9.61
	Revenue Miles Between Safety Incidents	425,927	355,350
	Revenue Miles Between Failures	5,476	4,876

* Data in this Handbook represent FY 2023 data for all agencies. For most agencies, FY 2023 is from October 2022 through September 2023. For three agencies (FDOT District One, SunRail, and Tri-Rail) FY 2023 is from July 2022 through June 2023..

** Resident Access to Transit is defined as the percent of the state's population that resides within one half-mile of an urban fixed transit route (motorbus or rail service). Because Florida's transit systems typically provide demand-response (e.g., Dial-a-Ride) or other services beyond a half-mile boundary around their fixed routes, a transit system's total service area population as reported in NTD is usually larger than its fixed-route service area. Approximately 85 percent of Florida's population resides within these total service area populations. Please see the definition for Resident Access to Transit in the Glossary of this document.

Florida's Urban Fixed-Route Transit System Summaries

Bayway Transit

919 Massalina Drive
Panama City, FL 32401
(850) 769-0557
www.baywaytransit.org



Bayway Transit provides contracted deviated fixed-route motorbus service and is governed by the Bay County Transportation Planning Organization (TPO). Contracted demand-response service is provided by Bay Area Transportation and Bay County. Data representing the Bayway Transit's motorbus service for 2022 and 2023 is shown below.

		2022	2023
GENERAL INFORMATION	Service Area Population	179,168	179,168
	Service Area Population Density	236.4	236.4
	Operating Expense	\$3,630,555	\$3,421,179
	Operating Revenue	\$531,381	\$501,098
SERVICE SUPPLIED	Total Annual Revenue Miles	494,953	482,464
	Total Annual Revenue Hours	39,737	39,048
	Total Revenue Vehicles	14	17
	Peak Vehicles	12	12
	Route Miles	126.0	126.3
SERVICE USAGE	Annual Passenger Trips	303,829	348,607
	Annual Passenger Miles	1,845,467	2,243,430
	Average Trip Length	6.1	6.4
QUALITY OF SERVICE	Resident Access to Transit	44.22%	42.07%
	Weekday Span of Service (hours)	14.00	14.00
COST EFFICIENCY	Operating Expense per Revenue Mile	\$7.34	\$7.09
	Operating Expense per Revenue Hour	\$91.36	\$87.61
	Operating Revenue per Operating Expense	14.64%	14.65%
	Passenger Trips per Employee FTE	n/a	n/a
COST EFFECTIVENESS	Operating Expense per Passenger Trip	\$11.95	\$9.81
	Operating Expense per Passenger Mile	\$1.97	\$1.53
	Operating Expense per Capita	\$20.26	\$19.09
	Farebox Recovery Ratio	9.50%	10.74%
	Average Fare	\$1.13	\$1.05
SERVICE EFFECTIVENESS	Passenger Trips per Revenue Mile	0.61	0.72
	Passenger Trips per Revenue Hour	7.65	8.93
	Passenger Trips per Capita	1.70	1.95
	Revenue Miles Between Safety Incidents	247,477	120,616
	Revenue Miles Between Failures	82,492	53,607

Florida's Urban Fixed-Route Transit System Summaries

Breeze Transit

5303 Pinkney Avenue
Sarasota, FL 34233
(941) 861-5000

<https://www.scgov.net/government/breeze-transit>



Breeze Transit is a member of the Sarasota County Government. The five-member Board of County Commissioners governs the agency. Breeze serves the urbanized portion of Sarasota County (including the municipalities of Longboat Key, Sarasota, Venice, Englewood, and North Port) via fixed-route motorbus services, and demand-response services. Breeze Transit's 2022 and 2023 motorbus data are provided below.

		2022	2023
GENERAL INFORMATION	Service Area Population	517,423	527,097
	Service Area Population Density	848.2	887.4
	Operating Expense	\$17,343,280	\$23,266,539
	Operating Revenue	\$1,094,985	\$1,772,702
SERVICE SUPPLIED	Total Annual Revenue Miles	2,044,964	2,021,970
	Total Annual Revenue Hours	147,067	144,861
	Total Revenue Vehicles	43	43
	Peak Vehicles	33	33
	Route Miles	296.2	293.7
SERVICE USAGE	Annual Passenger Trips	1,688,330	1,736,651
	Annual Passenger Miles	8,025,219	8,150,205
	Average Trip Length	4.8	4.7
QUALITY OF SERVICE	Resident Access to Transit	59.28%	59.82%
	Weekday Span of Service (hours)	18.48	18.48
COST EFFICIENCY	Operating Expense per Revenue Mile	\$8.48	\$11.51
	Operating Expense per Revenue Hour	\$117.93	\$160.61
	Operating Revenue per Operating Expense	6.31%	7.62%
	Passenger Trips per Employee FTE	10,795	10,528
COST EFFECTIVENESS	Operating Expense per Passenger Trip	\$10.27	\$13.40
	Operating Expense per Passenger Mile	\$2.16	\$2.85
	Operating Expense per Capita	\$35.52	\$44.14
	Farebox Recovery Ratio	5.81%	5.77%
	Average Fare	\$0.60	\$0.77
SERVICE EFFECTIVENESS	Passenger Trips per Revenue Mile	0.83	0.86
	Passenger Trips per Revenue Hour	11.48	11.99
	Passenger Trips per Capita	3.26	3.29
	Revenue Miles Between Safety Incidents	1,022,482	1,010,985
	Revenue Miles Between Failures	7,717	6,460

Florida's Urban Fixed-Route Transit System Summaries

Broward County Transit (BCT)

One N. University Drive, Suite 3100-A
 Plantation, FL 33324
 (954) 357-8300
www.broward.org/BCT



Broward County Transit is an agency of Broward County government responsible for operating a fixed-route motorbus service with several routes connecting with Palm Tran (in Palm Beach County), Miami-Dade Transit, and Tri-Rail (commuter rail service). In addition to fixed-route bus service, BCT also partners with many municipalities within the county to provide Community Bus services, including Fort Lauderdale's Sun Trolley, and offers contracted paratransit service. BCT and Broward Community Bus data for the years 2022 and 2023 are provided below.

		2022	2023
GENERAL INFORMATION	Service Area Population	1,930,983	1,944,375
	Service Area Population Density	4,511.6	4,542.9
	Operating Expense	\$159,297,578	\$163,338,781
	Operating Revenue	\$28,855,007	\$33,793,873
SERVICE SUPPLIED	Total Annual Revenue Miles	15,919,933	15,722,862
	Total Annual Revenue Hours	1,427,435	1,258,668
	Total Revenue Vehicles	486	485
	Peak Vehicles	349	342
	Route Miles	1,170.4	1,304.8
SERVICE USAGE	Annual Passenger Trips	21,159,241	23,611,038
	Annual Passenger Miles	95,285,231	111,036,418
	Average Trip Length	4.5	4.7
QUALITY OF SERVICE	Resident Access to Transit	99.79%	99.91%
	Weekday Span of Service (hours)	21.03	21.43
COST EFFICIENCY	Operating Expense per Revenue Mile	\$10.01	\$10.39
	Operating Expense per Revenue Hour	\$111.60	\$129.77
	Operating Revenue per Operating Expense	18.11%	20.69%
	Passenger Trips per Employee FTE	17,654	19,763
COST EFFECTIVENESS	Operating Expense per Passenger Trip	\$7.53	\$6.92
	Operating Expense per Passenger Mile	\$1.67	\$1.47
	Operating Expense per Capita	\$82.50	\$84.01
	Farebox Recovery Ratio	14.05%	15.02%
	Average Fare	\$1.06	\$1.04
SERVICE EFFECTIVENESS	Passenger Trips per Revenue Mile	1.33	1.50
	Passenger Trips per Revenue Hour	14.82	18.76
	Passenger Trips per Capita	10.96	12.14
	Revenue Miles Between Safety Incidents	241,211	349,397
	Revenue Miles Between Failures	3,443	3,042

Florida's Urban Fixed-Route Transit System Summaries

Citrus County Transit

1300 S. Lecanto Highway
 Lecanto, FL 34461
 (352) 527-7630
www.citruscountytransit.com



Citrus County Transit Service is a Division under the Department of Community Services of the Board of County Commissioners. Transit Services provides an on-demand service and also operates a deviated fixed-route service which connects Beverly Hills, Homosassa, Lecanto, and Inverness. 2022 and 2023 data for Citrus County are shown below. Citrus County Transit is an NTD reduced reporter and some data are not available.

		2022	2023
GENERAL INFORMATION	Service Area Population	30,858	30,858
	Service Area Population Density	629.8	629.8
	Operating Expense	\$589,294	\$679,250
	Operating Revenue	\$1,644	\$2,209
SERVICE SUPPLIED	Total Annual Revenue Miles	195,398	191,722
	Total Annual Revenue Hours	9,961	9,870
	Total Revenue Vehicles	4	4
	Peak Vehicles	4	4
	Route Miles	n/a	n/a
SERVICE USAGE	Annual Passenger Trips	15,449	23,817
	Annual Passenger Miles	n/a	n/a
	Average Trip Length	n/a	n/a
QUALITY OF SERVICE	Resident Access to Transit	28.93%	29.51%
	Weekday Span of Service (hours)	n/a	n/a
COST EFFICIENCY	Operating Expense per Revenue Mile	\$3.02	\$3.54
	Operating Expense per Revenue Hour	\$59.16	\$68.82
	Operating Revenue per Operating Expense	0.28%	0.33%
	Passenger Trips per Employee FTE	n/a	n/a
COST EFFECTIVENESS	Operating Expense per Passenger Trip	\$38.14	\$28.52
	Operating Expense per Passenger Mile	n/a	n/a
	Operating Expense per Capita	\$19.10	\$22.01
	Farebox Recovery Ratio	0.28%	0.33%
	Average Fare	\$0.11	\$0.09
SERVICE EFFECTIVENESS	Passenger Trips per Revenue Mile	0.08	0.12
	Passenger Trips per Revenue Hour	1.55	2.41
	Passenger Trips per Capita	0.5	0.77
	Revenue Miles Between Safety Incidents	n/a	n/a
	Revenue Miles Between Failures	n/a	n/a

Florida's Urban Fixed-Route Transit System Summaries

Collier Area Transit (CAT)

8300 Radio Road
 Naples, FL 34104
 (239) 252-7777
www.ridecat.com



Collier Area Transit is part of the Alternative Transportation Modes Department of Collier County Transportation, which is governed by the Collier County Board of County Commissioners. CAT provides fixed-route service in Collier County. Demand-response services are provided by Collier Area Paratransit. The data below represent CAT's 2022 and 2023 fixed-route purchased motorbus services.

		2022	2023
GENERAL INFORMATION	Service Area Population	384,902	384,902
	Service Area Population Density	190.1	190.1
	Operating Expense	\$7,869,565	\$8,825,391
	Operating Revenue	\$907,658	\$946,982
SERVICE SUPPLIED	Total Annual Revenue Miles	1,381,925	1,366,218
	Total Annual Revenue Hours	72,467	73,856
	Total Revenue Vehicles	30	31
	Peak Vehicles	22	19
	Route Miles	435.2	456.0
SERVICE USAGE	Annual Passenger Trips	662,396	722,918
	Annual Passenger Miles	4,837,664	6,649,464
	Average Trip Length	7.3	9.2
QUALITY OF SERVICE	Resident Access to Transit	54.79%	54.19%
	Weekday Span of Service (hours)	17.75	18.23
COST EFFICIENCY	Operating Expense per Revenue Mile	\$5.69	\$6.46
	Operating Expense per Revenue Hour	\$108.60	\$119.49
	Operating Revenue per Operating Expense	11.53%	10.73%
	Passenger Trips per Employee FTE	n/a	n/a
COST EFFECTIVENESS	Operating Expense per Passenger Trip	\$11.88	\$12.21
	Operating Expense per Passenger Mile	\$1.63	\$1.33
	Operating Expense per Capita	\$20.45	\$22.93
	Farebox Recovery Ratio	9.92%	9.48%
	Average Fare	\$1.18	\$1.16
SERVICE EFFECTIVENESS	Passenger Trips per Revenue Mile	0.48	0.53
	Passenger Trips per Revenue Hour	9.14	9.79
	Passenger Trips per Capita	1.72	1.88
	Revenue Miles Between Safety Incidents	n/a	n/a
	Revenue Miles Between Failures	9,871	19,517

Florida's Urban Fixed-Route Transit System Summaries

Escambia County Area Transit (ECAT)

1515 West Fairfield Drive
 Pensacola, FL 32501
 (850) 595-3228
www.goecat.com



Escambia County Area Transit is a department of the county government. A five-member elected Board of County Commissioners governs the department. In addition to providing directly-operated fixed-route motorbus service, ECAT contracts to provide demand-response transportation services. 2022 and 2023 motorbus data for ECAT are shown below.

		2022	2023
GENERAL INFORMATION	Service Area Population	390,172	241,661
	Service Area Population Density	1,483.5	1,278.6
	Operating Expense	\$9,342,156	\$10,114,732
	Operating Revenue	\$986,495	\$1,671,313
SERVICE SUPPLIED	Total Annual Revenue Miles	1,208,652	1,199,581
	Total Annual Revenue Hours	87,563	88,532
	Total Revenue Vehicles	49	45
	Peak Vehicles	45	32
	Route Miles	429.0	429.0
SERVICE USAGE	Annual Passenger Trips	733,141	781,415
	Annual Passenger Miles	3,592,391	3,842,679
	Average Trip Length	4.9	4.9
QUALITY OF SERVICE	Resident Access to Transit	58.71%	59.72%
	Weekday Span of Service (hours)	18.98	18.98
COST EFFICIENCY	Operating Expense per Revenue Mile	\$7.73	\$8.43
	Operating Expense per Revenue Hour	\$106.69	\$114.25
	Operating Revenue per Operating Expense	10.56%	16.52%
	Passenger Trips per Employee FTE	10,556	9,250
COST EFFECTIVENESS	Operating Expense per Passenger Trip	\$12.74	\$12.94
	Operating Expense per Passenger Mile	\$2.60	\$2.63
	Operating Expense per Capita	\$23.94	\$41.86
	Farebox Recovery Ratio	7.97%	9.68%
	Average Fare	\$1.02	\$1.25
SERVICE EFFECTIVENESS	Passenger Trips per Revenue Mile	0.61	0.65
	Passenger Trips per Revenue Hour	8.37	8.83
	Passenger Trips per Capita	1.88	3.23
	Revenue Miles Between Safety Incidents	241,730	239,916
	Revenue Miles Between Failures	10,419	5,998

Florida's Urban Fixed-Route Transit System Summaries

Gainesville Regional Transit System

34 SE 13 Road
Gainesville, FL 32601
(352) 334-2600
www.go-rts.com



The Regional Transit System (RTS) is a department of the City of Gainesville. An elected seven-member Commission governs the RTS. The Commission receives input from an advisory board comprised of citizens from the community. The RTS serves the City of Gainesville and parts of Alachua County with fixed-route motorbus service and contracts for vanpool services and demand-response transportation services throughout the City of Gainesville and up to three-quarters of a mile beyond its fixed-route network. The data shown below represent fixed-route motorbus and vanpool data for RTS in 2022 and 2023.

		2022	2023
GENERAL INFORMATION	Service Area Population	163,990	199,300
	Service Area Population Density	2,157.8	1,880.2
	Operating Expense	\$25,896,004	\$26,082,441
	Operating Revenue	\$15,017,676	\$16,290,653
SERVICE SUPPLIED	Total Annual Revenue Miles	3,295,298	3,156,550
	Total Annual Revenue Hours	269,576	254,303
	Total Revenue Vehicles	152	127
	Peak Vehicles	107	99
	Route Miles	253.2	253.5
SERVICE USAGE	Annual Passenger Trips	4,321,643	5,126,240
	Annual Passenger Miles	14,809,736	17,503,625
	Average Trip Length	3.4	3.4
QUALITY OF SERVICE	Resident Access to Transit	60.80%	61.36%
	Weekday Span of Service (hours)	17.75	18.75
COST EFFICIENCY	Operating Expense per Revenue Mile	\$7.86	\$8.26
	Operating Expense per Revenue Hour	\$96.06	\$102.56
	Operating Revenue per Operating Expense	57.99%	62.46%
	Passenger Trips per Employee FTE	17,946	20,360
COST EFFECTIVENESS	Operating Expense per Passenger Trip	\$5.99	\$5.09
	Operating Expense per Passenger Mile	\$1.75	\$1.49
	Operating Expense per Capita	\$157.91	\$130.87
	Farebox Recovery Ratio	54.62%	58.70%
	Average Fare	\$3.27	\$2.99
SERVICE EFFECTIVENESS	Passenger Trips per Revenue Mile	1.31	1.62
	Passenger Trips per Revenue Hour	16.03	20.16
	Passenger Trips per Capita	26.35	25.72
	Revenue Miles Between Safety Incidents	299,573	242,812
	Revenue Miles Between Failures	12,250	16,023

Florida's Urban Fixed-Route Transit System Summaries

Hernando (TheBus)

1525 East Jefferson Avenue
 Brooksville, FL 34601
 (352) 754-4444
www.hernanodobus.com



The County contracts with Trans-Hernando to operate THE Bus, Hernando County's fixed-route transportation service. Trans-Hernando reports to the Metropolitan Planning Organization and a five-member Board of County Commissioners. The transit system provides fixed-route transit service to the city of Brooksville and Spring Hill, with a shuttle connecting the two areas. Trans-Hernando Para-Transit also provides demand-response service throughout Hernando County. 2022 and 2023 data representing THE Bus's fixed-route motorbus service are shown below. Hernando County is an NTD reduced reporter and some data are not available.

		2022	2023
GENERAL INFORMATION	Service Area Population	119,384	119,384
	Service Area Population Density	1,341.4	1,341.4
	Operating Expense	\$2,560,754	\$2,403,323
	Operating Revenue	\$104,872	\$131,248
SERVICE SUPPLIED	Total Annual Revenue Miles	553,508	554,483
	Total Annual Revenue Hours	28,603	28,575
	Total Revenue Vehicles	7	7
	Peak Vehicles	7	7
	Route Miles	n/a	n/a
SERVICE USAGE	Annual Passenger Trips	122,298	134,242
	Annual Passenger Miles	n/a	n/a
	Average Trip Length	n/a	n/a
QUALITY OF SERVICE	Resident Access to Transit	40.40%	39.66%
	Weekday Span of Service (hours)	12.5	12.5
COST EFFICIENCY	Operating Expense per Revenue Mile	\$4.63	\$4.33
	Operating Expense per Revenue Hour	\$89.53	\$84.11
	Operating Revenue per Operating Expense	4.10%	5.46%
	Passenger Trips per Employee FTE	n/a	n/a
COST EFFECTIVENESS	Operating Expense per Passenger Trip	\$20.94	\$17.90
	Operating Expense per Passenger Mile	n/a	n/a
	Operating Expense per Capita	\$21.45	\$20.13
	Farebox Recovery Ratio	3.56%	4.85%
	Average Fare	\$0.75	\$0.87
SERVICE EFFECTIVENESS	Passenger Trips per Revenue Mile	0.22	0.24
	Passenger Trips per Revenue Hour	4.28	4.70
	Passenger Trips per Capita	1.02	1.12
	Revenue Miles Between Safety Incidents	n/a	n/a
	Revenue Miles Between Failures	n/a	n/a

Florida's Urban Fixed-Route Transit System Summaries

Hillsborough Area Regional Transit Authority (HART)

1201 E. 7th Avenue
Tampa, FL 33605
(813) 254-4278
www.gohart.org



The Hillsborough Area Regional Transit Authority (HART) operates motorbus service as well as the TECO Line Streetcar connecting downtown with the Ybor City Historic District. Paratransit service is provided for the City of Tampa, the City of Temple Terrace, and unincorporated Hillsborough County. The authority is governed by a Board of Directors comprised of twelve representatives appointed by the governing bodies of its members and the Governor of the State of Florida. 2022 and 2023 data for HART's fixed-route bus and rail services are shown below.

		2022	2023
GENERAL INFORMATION	Service Area Population	1,450,191	1,102,787
	Service Area Population Density	1,166.7	2,638.2
	Operating Expense	\$91,557,572	\$86,592,337
	Operating Revenue	\$11,935,332	\$11,792,323
SERVICE SUPPLIED	Total Annual Revenue Miles	6,667,991	6,709,273
	Total Annual Revenue Hours	558,479	552,954
	Total Revenue Vehicles	143	140
	Peak Vehicles	103	104
	Route Miles	1,002.5	1,002.5
SERVICE USAGE	Annual Passenger Trips	10,751,987	12,343,782
	Annual Passenger Miles	50,771,166	51,227,262
	Average Trip Length	4.7	4.2
QUALITY OF SERVICE	Resident Access to Transit	52.27%	52.28%
	Weekday Span of Service (hours)	21.22	20.75
COST EFFICIENCY	Operating Expense per Revenue Mile	\$13.73	\$12.91
	Operating Expense per Revenue Hour	\$163.94	\$156.60
	Operating Revenue per Operating Expense	13.04%	13.62%
	Passenger Trips per Employee FTE	15,947	17,970
COST EFFECTIVENESS	Operating Expense per Passenger Trip	\$8.52	\$7.02
	Operating Expense per Passenger Mile	\$1.80	\$1.69
	Operating Expense per Capita	\$63.13	\$78.52
	Farebox Recovery Ratio	7.98%	9.07%
	Average Fare	\$0.68	\$0.64
SERVICE EFFECTIVENESS	Passenger Trips per Revenue Mile	1.61	1.84
	Passenger Trips per Revenue Hour	19.25	22.32
	Passenger Trips per Capita	7.41	11.19
	Revenue Miles Between Safety Incidents	208,375	181,332
	Revenue Miles Between Failures	3,670	3,561

Florida's Urban Fixed-Route Transit System Summaries

Indian River (GoLine)

694 14th Street
 Vero Beach, FL 32960
 (772) 569-0903
www.GoLineIRT.com



Senior Resource Association operates as the Transit Element of Indian River County, in a quasi-governmental status under the five-member elected Board of County Commissioners. It is governed by a volunteer Board of Directors. GoLine serves the rural and urbanized portions of Indian River County. The system provides point deviation motorbus services, and demand-response van, wheelchair, and stretcher services. The data shown below represent 2022 and 2023 motorbus services.

		2022	2023
GENERAL INFORMATION	Service Area Population	163,662	166,316
	Service Area Population Density	754.2	745.8
	Operating Expense	\$3,730,226	\$4,072,838
	Operating Revenue	\$32,151	\$66,609
SERVICE SUPPLIED	Total Annual Revenue Miles	894,712	943,981
	Total Annual Revenue Hours	49,880	50,614
	Total Revenue Vehicles	20	20
	Peak Vehicles	14	14
	Route Miles	342.0	348.0
SERVICE USAGE	Annual Passenger Trips	1,204,772	1,261,556
	Annual Passenger Miles	5,498,505	5,695,674
	Average Trip Length	4.6	4.5
QUALITY OF SERVICE	Resident Access to Transit	71.15%	69.63%
	Weekday Span of Service (hours)	13.00	13.00
COST EFFICIENCY	Operating Expense per Revenue Mile	\$4.17	\$4.31
	Operating Expense per Revenue Hour	\$74.78	\$80.47
	Operating Revenue per Operating Expense	0.86%	1.64%
	Passenger Trips per Employee FTE	n/a	n/a
COST EFFECTIVENESS	Operating Expense per Passenger Trip	\$3.10	\$3.23
	Operating Expense per Passenger Mile	\$0.68	\$0.72
	Operating Expense per Capita	\$22.79	\$24.49
	Farebox Recovery Ratio	0.00%	0.05%
	Average Fare	\$0.00	\$0.00
SERVICE EFFECTIVENESS	Passenger Trips per Revenue Mile	1.35	1.34
	Passenger Trips per Revenue Hour	24.15	24.93
	Passenger Trips per Capita	7.36	7.59
	Revenue Miles Between Safety Incidents	n/a	n/a
	Revenue Miles Between Failures	298,237	314,660

Florida's Urban Fixed-Route Transit System Summaries

Jacksonville Transportation Authority (JTA)

121 West Forsyth Street, Suite 200
 Jacksonville, FL 32202
 (904) 630-3181
www.jtafla.com



Jacksonville Transportation Authority is an independent authority that is governed by a seven-member, appointed Board of Directors. The Jacksonville system provides its services within Duval County and northern Clay County (Orange Park). JTA transportation services include fixed-route motorbus, commuter bus, automated guideway (Skyway Express), ferry boat, and demand-response. The data below represent JTA's 2022 and 2023 fixed-route services.

		2022	2023
GENERAL INFORMATION	Service Area Population	1,247,374	1,264,452
	Service Area Population Density	913.2	699.8
	Operating Expense	\$110,294,201	\$121,446,736
	Operating Revenue	\$8,138,524	\$7,937,585
SERVICE SUPPLIED	Total Annual Revenue Miles	7,924,284	8,103,240
	Total Annual Revenue Hours	580,556	586,248
	Total Revenue Vehicles	235	235
	Peak Vehicles	125	132
	Route Miles	1,307.7	1,657.4
SERVICE USAGE	Annual Passenger Trips	5,867,113	6,380,233
	Annual Passenger Miles	30,856,916	34,001,887
	Average Trip Length	5.3	5.3
QUALITY OF SERVICE	Resident Access to Transit	72.81%	78.31%
	Weekday Span of Service (hours)	22.1	22.3
COST EFFICIENCY	Operating Expense per Revenue Mile	\$13.92	\$14.99
	Operating Expense per Revenue Hour	\$189.98	\$207.16
	Operating Revenue per Operating Expense	7.38%	6.54%
	Passenger Trips per Employee FTE	8,520	8,981
COST EFFECTIVENESS	Operating Expense per Passenger Trip	\$18.80	\$19.03
	Operating Expense per Passenger Mile	\$3.57	\$3.57
	Operating Expense per Capita	\$88.42	\$96.05
	Farebox Recovery Ratio	6.66%	5.71%
	Average Fare	\$1.25	\$1.09
SERVICE EFFECTIVENESS	Passenger Trips per Revenue Mile	0.74	0.79
	Passenger Trips per Revenue Hour	10.11	10.88
	Passenger Trips per Capita	4.70	5.05
	Revenue Miles Between Safety Incidents	495,268	324,130
	Revenue Miles Between Failures	18,092	16,812

Florida's Urban Fixed-Route Transit System Summaries

Lake County Public Transportation (LakeXpress)

315 W. Main Street, Suite 335
 Tavares, FL 32778
 (352) 323-5733
www.ridelakexpress.com



LakeXpress operates by contract under the Lake County Board of County Commissioners. Services provided include fixed-route LakeXpress and the Lake County Connection for demand-response service. LakeXpress was started in May 2007 and the County has served as the Community Transportation Coordinator since 2001. Data for 2022 and 2023 are shown below.

		2022	2023
GENERAL INFORMATION	Service Area Population	97,497	97,497
	Service Area Population Density	1,373.2	1,373.2
	Operating Expense	\$3,563,644	\$4,220,117
	Operating Revenue	\$227,868	\$423,538
SERVICE SUPPLIED	Total Annual Revenue Miles	548,750	620,827
	Total Annual Revenue Hours	33,196	37,212
	Total Revenue Vehicles	17	17
	Peak Vehicles	10	12
	Route Miles	173.8	212.7
SERVICE USAGE	Annual Passenger Trips	199,138	218,604
	Annual Passenger Miles	1,280,457	1,383,763
	Average Trip Length	6.4	6.3
QUALITY OF SERVICE	Resident Access to Transit	36.93%	31.93%
	Weekday Span of Service (hours)	15.00	15.00
COST EFFICIENCY	Operating Expense per Revenue Mile	\$6.49	\$6.80
	Operating Expense per Revenue Hour	\$107.35	\$113.41
	Operating Revenue per Operating Expense	6.39%	10.04%
	Passenger Trips per Employee FTE	n/a	n/a
COST EFFECTIVENESS	Operating Expense per Passenger Trip	\$17.90	\$19.30
	Operating Expense per Passenger Mile	\$2.78	\$3.05
	Operating Expense per Capita	\$36.55	\$43.28
	Farebox Recovery Ratio	2.73%	2.52%
	Average Fare	\$0.49	\$0.49
SERVICE EFFECTIVENESS	Passenger Trips per Revenue Mile	0.36	0.35
	Passenger Trips per Revenue Hour	6.00	5.87
	Passenger Trips per Capita	2.04	2.24
	Revenue Miles Between Safety Incidents	548,750	620,827
	Revenue Miles Between Failures	5,716	6,535

Florida's Urban Fixed-Route Transit System Summaries

Lakeland Area Mass Transit District (Citrus Connection)

1212 George Jenkins Blvd.
Lakeland, FL 33815
(863) 688-7433
www.ridecitrus.com



Lakeland Area Mass Transit District is an independent district governed by a five-member Board of Directors. The District serves the greater Lakeland area via fixed-route motorbus services (Citrus Connection), including Winter Haven Area Transit and demand-response services. The data below represent 2022 and 2023 motorbus data.

		2022	2023
GENERAL INFORMATION	Service Area Population	724,777	819,629
	Service Area Population Density	9,412.7	10,644.5
	Operating Expense	\$13,050,903	\$15,206,287
	Operating Revenue	\$731,365	\$1,190,718
SERVICE SUPPLIED	Total Annual Revenue Miles	1,790,750	2,084,113
	Total Annual Revenue Hours	109,890	128,447
	Total Revenue Vehicles	51	49
	Peak Vehicles	41	44
	Route Miles	761.3	1065.7
SERVICE USAGE	Annual Passenger Trips	613,383	764,190
	Annual Passenger Miles	3,609,428	4,156,712
	Average Trip Length	5.9	5.4
QUALITY OF SERVICE	Resident Access to Transit	38.88%	38.71%
	Weekday Span of Service (hours)	15.10	15.00
COST EFFICIENCY	Operating Expense per Revenue Mile	\$7.29	\$7.30
	Operating Expense per Revenue Hour	\$118.76	\$118.39
	Operating Revenue per Operating Expense	5.60%	7.83%
	Passenger Trips per Employee FTE	4,452	4,786
COST EFFECTIVENESS	Operating Expense per Passenger Trip	\$21.28	\$19.90
	Operating Expense per Passenger Mile	\$3.62	\$3.66
	Operating Expense per Capita	\$18.01	\$18.55
	Farebox Recovery Ratio	3.49%	3.72%
	Average Fare	\$0.74	\$0.74
SERVICE EFFECTIVENESS	Passenger Trips per Revenue Mile	0.34	0.37
	Passenger Trips per Revenue Hour	5.58	5.95
	Passenger Trips per Capita	0.85	0.93
	Revenue Miles Between Safety Incidents	895,375	1,042,057
	Revenue Miles Between Failures	8,778	10,317

Florida's Urban Fixed-Route Transit System Summaries

Lee County Transit (LeeTran)

3401 Metro Parkway
 Fort Myers, FL 33901
 (239) 533-8726
www.rideleetrans.com



Lee County Transit is an independent division of the Lee County Government. The Lee County Board of County Commissioners, a five-member public policy body, governs the division. LeeTran provides public transportation services to Lee County via fixed-route motorbus services and demand-response services. LeeTran's fixed-route motorbus data for 2022 and 2023 are below.

		2022	2023
GENERAL INFORMATION	Service Area Population	802,178	802,178
	Service Area Population Density	978.3	978.3
	Operating Expense	\$19,343,652	\$19,510,056
	Operating Revenue	\$3,651,009	\$3,864,236
SERVICE SUPPLIED	Total Annual Revenue Miles	2,851,565	2,650,181
	Total Annual Revenue Hours	194,635	174,727
	Total Revenue Vehicles	76	64
	Peak Vehicles	45	41
	Route Miles	545.0	538.0
SERVICE USAGE	Annual Passenger Trips	2,057,592	1,525,767
	Annual Passenger Miles	10,891,820	8,088,649
	Average Trip Length	5.3	5.3
QUALITY OF SERVICE	Resident Access to Transit	50.24%	50.32%
	Weekday Span of Service (hours)	19.58	19.58
COST EFFICIENCY	Operating Expense per Revenue Mile	\$6.78	\$7.36
	Operating Expense per Revenue Hour	\$99.38	\$111.66
	Operating Revenue per Operating Expense	18.87%	19.81%
	Passenger Trips per Employee FTE	12,001	8,597
COST EFFECTIVENESS	Operating Expense per Passenger Trip	\$9.40	\$12.79
	Operating Expense per Passenger Mile	\$1.78	\$2.41
	Operating Expense per Capita	\$24.11	\$24.32
	Farebox Recovery Ratio	8.78%	8.51%
	Average Fare	\$0.83	\$1.09
SERVICE EFFECTIVENESS	Passenger Trips per Revenue Mile	0.72	0.58
	Passenger Trips per Revenue Hour	10.57	8.73
	Passenger Trips per Capita	2.57	1.90
	Revenue Miles Between Safety Incidents	356,446	203,860
	Revenue Miles Between Failures	35,205	27,606

Florida's Urban Fixed-Route Transit System Summaries

LYNX Transit (Central Florida Regional Transit Authority)

455 North Garland Avenue
 Orlando, FL 32801
 (407) 841-2279
www.golynx.com



LYNX is an independent authority that is governed by a Board of Directors. The authority provides service to Orange County (including Orlando, Winter Park, Maitland, and others), Seminole County (including Altamonte Springs, Casselberry, and Sanford), and Osceola County (including Kissimmee and St. Cloud). LYNX provides fixed-route motorbus service (including the Lymmo bus rapid transit), vanpool service, paratransit service, transportation-disadvantaged coordination, a five-county regional ridesharing assistance program, and vanpool service. 2022 and 2023 fixed-route motorbus and vanpool data for LYNX are provided below.

		2022	2023
GENERAL INFORMATION	Service Area Population	2,289,420	2,296,523
	Service Area Population Density	901.3	801.9
	Operating Expense	\$118,063,153	\$143,366,681
	Operating Revenue	\$21,723,394	\$29,231,247
SERVICE SUPPLIED	Total Annual Revenue Miles	17,049,710	17,078,335
	Total Annual Revenue Hours	1,199,635	1,204,773
	Total Revenue Vehicles	495	489
	Peak Vehicles	389	402
	Route Miles	2,095.4	2,680.4
SERVICE USAGE	Annual Passenger Trips	16,170,764	17,749,325
	Annual Passenger Miles	86,738,741	104,182,902
	Average Trip Length	5.4	5.9
QUALITY OF SERVICE	Resident Access to Transit	55.31%	54.34%
	Weekday Span of Service (hours)	23.00	23.98
COST EFFICIENCY	Operating Expense per Revenue Mile	\$6.92	\$8.39
	Operating Expense per Revenue Hour	\$98.42	\$119.00
	Operating Revenue per Operating Expense	18.40%	20.39%
	Passenger Trips per Employee FTE	11,824	12,345
COST EFFECTIVENESS	Operating Expense per Passenger Trip	\$7.30	\$8.08
	Operating Expense per Passenger Mile	\$1.36	\$1.38
	Operating Expense per Capita	\$51.57	\$62.43
	Farebox Recovery Ratio	14.34%	13.12%
	Average Fare	\$1.05	\$1.06
SERVICE EFFECTIVENESS	Passenger Trips per Revenue Mile	0.95	1.04
	Passenger Trips per Revenue Hour	13.48	14.73
	Passenger Trips per Capita	7.06	7.73
	Revenue Miles Between Safety Incidents	210,490	187,674
	Revenue Miles Between Failures	8,829	8,998

Florida's Urban Fixed-Route Transit System Summaries

Manatee County Area Transit (MCAT)

1108 26th Avenue East
 Bradenton, FL 34208
 (941) 747-8621

www.mymanatee.org/departments/mcat



Manatee County Area Transit is a division within the Community Services Department of Manatee County. The Board of County Commissioners governs the division. MCAT provides service to the urbanized parts of Manatee County via fixed-route motorbus services and demand-response services. 2022 and 2023 data for MCAT's fixed-route motorbus services are provided on this page.

		2022	2023
GENERAL INFORMATION	Service Area Population	399,710	439,566
	Service Area Population Density	538.0	591.6
	Operating Expense	\$10,846,687	\$11,337,516
	Operating Revenue	\$816,773	\$183,320
SERVICE SUPPLIED	Total Annual Revenue Miles	1,478,881	1,388,490
	Total Annual Revenue Hours	101,597	95,011
	Total Revenue Vehicles	41	41
	Peak Vehicles	25	25
	Route Miles	306.0	398.0
SERVICE USAGE	Annual Passenger Trips	1,244,847	1,533,921
	Annual Passenger Miles	6,498,884	6,827,417
	Average Trip Length	5.2	4.5
QUALITY OF SERVICE	Resident Access to Transit	67.21%	67.09%
	Weekday Span of Service (hours)	17.25	17.25
COST EFFICIENCY	Operating Expense per Revenue Mile	\$7.33	\$8.17
	Operating Expense per Revenue Hour	\$106.76	\$119.33
	Operating Revenue per Operating Expense	7.53%	1.62%
	Passenger Trips per Employee FTE	14,456	16,798
COST EFFECTIVENESS	Operating Expense per Passenger Trip	\$8.71	\$7.39
	Operating Expense per Passenger Mile	\$1.67	\$1.66
	Operating Expense per Capita	\$27.14	\$25.79
	Farebox Recovery Ratio	6.71%	0.87%
	Average Fare	\$0.58	\$0.06
SERVICE EFFECTIVENESS	Passenger Trips per Revenue Mile	0.84	1.10
	Passenger Trips per Revenue Hour	12.25	16.14
	Passenger Trips per Capita	3.11	3.49
	Revenue Miles Between Safety Incidents	369,720	173,561
	Revenue Miles Between Failures	4,143	4,272

Florida's Urban Fixed-Route Transit System Summaries

Martin County (Marty)

2401 SE Monterey Road
 Stuart, FL 34996
 (772) 463-2860
www.martin.fl.us/transit



Martin County contracts to provide fixed-route and deviated-route motorbus services (including commuter bus), shared ride Americans with Disabilities Act (ADA) services, and general paratransit services. 2022 and 2023 motorbus data are displayed below.

		2022	2023
GENERAL INFORMATION	Service Area Population	159,942	159,942
	Service Area Population Density	2,460.6	2,460.6
	Operating Expense	\$2,649,129	\$2,834,095
	Operating Revenue	\$115,135	\$132,554
SERVICE SUPPLIED	Total Annual Revenue Miles	597,350	605,864
	Total Annual Revenue Hours	29,760	30,110
	Total Revenue Vehicles	14	14
	Peak Vehicles	9	9
	Route Miles	164.0	164.0
SERVICE USAGE	Annual Passenger Trips	88,904	103,642
	Annual Passenger Miles	692,741	844,948
	Average Trip Length	7.8	8.2
QUALITY OF SERVICE	Resident Access to Transit	34.74%	35.33%
	Weekday Span of Service (hours)	14.00	14.00
COST EFFICIENCY	Operating Expense per Revenue Mile	\$4.43	\$4.68
	Operating Expense per Revenue Hour	\$89.02	\$94.12
	Operating Revenue per Operating Expense	4.35%	4.68%
	Passenger Trips per Employee FTE	n/a	n/a
COST EFFECTIVENESS	Operating Expense per Passenger Trip	\$29.80	\$27.35
	Operating Expense per Passenger Mile	\$3.82	\$3.35
	Operating Expense per Capita	\$16.56	\$17.72
	Farebox Recovery Ratio	4.11%	4.68%
	Average Fare	\$1.22	\$1.28
SERVICE EFFECTIVENESS	Passenger Trips per Revenue Mile	0.15	0.17
	Passenger Trips per Revenue Hour	2.99	3.44
	Passenger Trips per Capita	0.56	0.65
	Revenue Miles Between Safety Incidents	n/a	n/a
	Revenue Miles Between Failures	49,779	37,867

Florida's Urban Fixed-Route Transit System Summaries

Miami-Dade Transit (MDT)

Overtown Transit Village
 701 NW 1st Court, Suite 1700
 Miami, FL 33136
 (786) 469-5406
www.miamidade.gov/transit



Miami-Dade Transit is the largest transit agency in Florida, operating throughout Miami-Dade County, southern Broward County, and northern Monroe County. MDT is governed by Miami-Dade County, and is responsible for the management, construction, and operation of its services and facilities. Passengers have access to Metrobus, Metrorail (a 23-station heavy rail system), and Metromover (an automated people-mover system that serves the downtown Miami, Brickell and Omni areas). Commuter bus and vanpool services are also provided, and paratransit is available through MDT's Special Transportation Service. The data shown below represent all of MDT's fixed-route services and area vanpool services for 2022 and 2023.

		2022	2023
GENERAL INFORMATION	Service Area Population	2,701,767	2,701,767
	Service Area Population Density	8,829.3	8,829.3
	Operating Expense	\$554,131,400	\$649,000,281
	Operating Revenue	\$86,814,604	\$139,378,830
SERVICE SUPPLIED	Total Annual Revenue Miles	37,809,347	38,038,685
	Total Annual Revenue Hours	2,383,340	2,407,731
	Total Revenue Vehicles	1,329	1,196
	Peak Vehicles	1,007	958
	Route Miles	2,413.8	2,417.6
SERVICE USAGE	Annual Passenger Trips	54,788,624	76,537,790
	Annual Passenger Miles	286,754,345	395,602,013
	Average Trip Length	5.2	5.2
QUALITY OF SERVICE	Resident Access to Transit	95.81%	95.53%
	Weekday Span of Service (hours)	24.00	24.00
COST EFFICIENCY	Operating Expense per Revenue Mile	\$14.66	\$17.06
	Operating Expense per Revenue Hour	\$232.50	\$269.55
	Operating Revenue per Operating Expense	15.67%	21.48%
	Passenger Trips per Employee FTE	18,981	23,731
COST EFFECTIVENESS	Operating Expense per Passenger Trip	\$10.11	\$8.48
	Operating Expense per Passenger Mile	\$1.93	\$1.64
	Operating Expense per Capita	\$205.10	\$240.21
	Farebox Recovery Ratio	11.88%	11.73%
	Average Fare	\$1.20	\$0.99
SERVICE EFFECTIVENESS	Passenger Trips per Revenue Mile	1.45	2.01
	Passenger Trips per Revenue Hour	22.99	31.79
	Passenger Trips per Capita	20.28	28.33
	Revenue Miles Between Safety Incidents	1,050,260	458,297
	Revenue Miles Between Failures	3,274	2,907

Florida's Urban Fixed-Route Transit System Summaries

Okaloosa County (EC Rider)

600 Transit Way
 Fort Walton Beach, FL 32547
 (850) 833-9168
www.ecrider.org



The Okaloosa County Board of County Commissioners contracts to operate the Emerald Coast Rider (EC Rider), also known as the Wave, which provides service in Fort Walton Beach and Crestview. In addition, demand-response services are provided by the county. 2022 and 2023 data representing EC Rider's fixed-route motorbus service are presented below.

		2022	2023
GENERAL INFORMATION	Service Area Population	196,512	211,668
	Service Area Population Density	1,637.6	1,156.7
	Operating Expense	\$1,561,854	\$2,057,439
	Operating Revenue	\$77,180	\$82,929
SERVICE SUPPLIED	Total Annual Revenue Miles	377,166	384,815
	Total Annual Revenue Hours	29,207	29,809
	Total Revenue Vehicles	17	17
	Peak Vehicles	10	10
	Route Miles	229.0	230.0
SERVICE USAGE	Annual Passenger Trips	61,913	57,003
	Annual Passenger Miles	316,738	291,338
	Average Trip Length	5.1	5.1
QUALITY OF SERVICE	Resident Access to Transit	46.71%	41.46%
	Weekday Span of Service (hours)	13.00	13.00
COST EFFICIENCY	Operating Expense per Revenue Mile	\$4.14	\$5.35
	Operating Expense per Revenue Hour	\$53.48	\$69.02
	Operating Revenue per Operating Expense	4.94%	4.03%
	Passenger Trips per Employee FTE	n/a	n/a
COST EFFECTIVENESS	Operating Expense per Passenger Trip	\$25.23	\$36.09
	Operating Expense per Passenger Mile	\$4.93	\$7.06
	Operating Expense per Capita	\$7.95	\$9.72
	Farebox Recovery Ratio	3.78%	2.91%
	Average Fare	\$0.95	\$1.05
SERVICE EFFECTIVENESS	Passenger Trips per Revenue Mile	0.16	0.15
	Passenger Trips per Revenue Hour	2.12	1.91
	Passenger Trips per Capita	0.32	0.27
	Revenue Miles Between Safety Incidents	n/a	n/a
	Revenue Miles Between Failures	12,572	10,995

Florida's Urban Fixed-Route Transit System Summaries

Palm Beach County Transportation Agency (Palm Tran)

3201 Electronics Way
 West Palm Beach, FL 33407
 (561) 841-4200
www.palmtran.org



Palm Tran is a not-for-profit corporation owned by Palm Beach County that is governed by the seven-member Board of County Commissioners. The corporation provides transit services throughout Palm Beach County. Palm Tran operates fixed-route motorbus services and feeder bus services to the Tri-Rail system. In addition, Palm Tran offers route deviation and demand-response services via Palm Tran CONNECTION. 2022 and 2023 motorbus data for Palm Tran are provided below.

		2022	2023
GENERAL INFORMATION	Service Area Population	1,497,987	1,497,987
	Service Area Population Density	760.4	760.4
	Operating Expense	\$74,033,662	\$74,392,851
	Operating Revenue	\$8,887,089	\$10,039,348
SERVICE SUPPLIED	Total Annual Revenue Miles	7,296,517	7,388,404
	Total Annual Revenue Hours	503,886	510,830
	Total Revenue Vehicles	143	143
	Peak Vehicles	116	117
	Route Miles	902.0	993.0
SERVICE USAGE	Annual Passenger Trips	6,357,425	7,442,946
	Annual Passenger Miles	35,547,557	39,068,251
	Average Trip Length	5.6	5.2
QUALITY OF SERVICE	Resident Access to Transit	66.80%	66.60%
	Weekday Span of Service (hours)	18.45	18.45
COST EFFICIENCY	Operating Expense per Revenue Mile	\$10.15	\$10.07
	Operating Expense per Revenue Hour	\$146.93	\$145.63
	Operating Revenue per Operating Expense	12.00%	13.50%
	Passenger Trips per Employee FTE	13,503	14,047
COST EFFECTIVENESS	Operating Expense per Passenger Trip	\$11.65	\$10.00
	Operating Expense per Passenger Mile	\$2.08	\$1.90
	Operating Expense per Capita	\$49.42	\$49.66
	Farebox Recovery Ratio	10.00%	11.80%
	Average Fare	\$1.16	\$1.18
SERVICE EFFECTIVENESS	Passenger Trips per Revenue Mile	0.87	1.01
	Passenger Trips per Revenue Hour	12.62	14.57
	Passenger Trips per Capita	4.24	4.97
	Revenue Miles Between Safety Incidents	561,271	568,339
	Revenue Miles Between Failures	10,499	4,550

Florida's Urban Fixed-Route Transit System Summaries

Pasco County Public Transportation (PCPT)

8620 Galen Wilson Boulevard
 Port Richey, FL 34668
 (727) 834-3322
www.gopasco.com



Pasco County Public Transportation is a division of Pasco County Government, governed by the five-member Pasco County Commission. Fixed-route bus service is provided in urbanized West Pasco County and the municipalities of East Pasco County. Demand-response (advance reservation) service is available throughout Pasco County. The data provided below represent PCPT's fixed-route motorbus data for 2022 and 2023.

		2022	2023
GENERAL INFORMATION	Service Area Population	584,067	584,067
	Service Area Population Density	781.9	781.9
	Operating Expense	\$8,091,598	\$9,052,024
	Operating Revenue	\$882,238	\$948,637
SERVICE SUPPLIED	Total Annual Revenue Miles	1,486,346	1,444,853
	Total Annual Revenue Hours	89,392	86,878
	Total Revenue Vehicles	36	39
	Peak Vehicles	25	22
	Route Miles	390.0	390.0
SERVICE USAGE	Annual Passenger Trips	559,249	639,587
	Annual Passenger Miles	3,175,127	3,365,676
	Average Trip Length	5.7	5.3
QUALITY OF SERVICE	Resident Access to Transit	46.16%	45.36%
	Weekday Span of Service (hours)	18.00	18.00
COST EFFICIENCY	Operating Expense per Revenue Mile	\$5.44	\$6.27
	Operating Expense per Revenue Hour	\$90.52	\$104.19
	Operating Revenue per Operating Expense	10.90%	10.48%
	Passenger Trips per Employee FTE	5,983	7,547
COST EFFECTIVENESS	Operating Expense per Passenger Trip	\$14.47	\$14.15
	Operating Expense per Passenger Mile	\$2.55	\$2.69
	Operating Expense per Capita	\$13.85	\$15.50
	Farebox Recovery Ratio	6.56%	6.72%
	Average Fare	\$0.95	\$0.95
SERVICE EFFECTIVENESS	Passenger Trips per Revenue Mile	0.38	0.44
	Passenger Trips per Revenue Hour	6.26	7.36
	Passenger Trips per Capita	0.96	1.10
	Revenue Miles Between Safety Incidents	1,486,346	n/a
	Revenue Miles Between Failures	17,084	22,934

Florida's Urban Fixed-Route Transit System Summaries

Pinellas Suncoast Transit Authority (PSTA)

3201 Scherer Drive
 St. Petersburg, FL 33716
 (727) 540-1800
www.psta.net



The Pinellas Suncoast Transit Authority (PSTA) is the public transit provider for Pinellas County. In addition, two express routes travel between Pinellas County and Tampa, located in neighboring Hillsborough County. PSTA is an independent agency governed by an eleven-member Board of Directors comprised of elected officials and private citizen appointees. PSTA provides fixed-route motorbus services (both directly-operated and contracted), and also provides demand-response services. PSTA's fixed-route motorbus data for 2022 and 2023 are shown below.

		2022	2023
GENERAL INFORMATION	Service Area Population	1,100,607	1,102,307
	Service Area Population Density	3,620.4	3,626.0
	Operating Expense	\$84,912,160	\$101,094,081
	Operating Revenue	\$7,686,124	\$10,089,514
SERVICE SUPPLIED	Total Annual Revenue Miles	9,229,010	9,800,838
	Total Annual Revenue Hours	671,199	701,340
	Total Revenue Vehicles	238	229
	Peak Vehicles	183	194
	Route Miles	875.6	896.2
SERVICE USAGE	Annual Passenger Trips	8,465,048	9,999,781
	Annual Passenger Miles	45,830,264	52,822,259
	Average Trip Length	5.4	5.3
QUALITY OF SERVICE	Resident Access to Transit	95.10%	93.60%
	Weekday Span of Service (hours)	20.35	20.25
COST EFFICIENCY	Operating Expense per Revenue Mile	\$9.20	\$10.31
	Operating Expense per Revenue Hour	\$126.51	\$144.14
	Operating Revenue per Operating Expense	9.05%	9.98%
	Passenger Trips per Employee FTE	12,207	14,939
COST EFFECTIVENESS	Operating Expense per Passenger Trip	\$10.03	\$10.11
	Operating Expense per Passenger Mile	\$1.85	\$1.91
	Operating Expense per Capita	\$77.15	\$91.71
	Farebox Recovery Ratio	7.42%	6.47%
	Average Fare	\$0.74	\$0.65
SERVICE EFFECTIVENESS	Passenger Trips per Revenue Mile	0.92	1.02
	Passenger Trips per Revenue Hour	12.61	14.26
	Passenger Trips per Capita	7.69	9.07
	Revenue Miles Between Safety Incidents	236,641	257,917
	Revenue Miles Between Failures	17,380	17,533

Florida's Urban Fixed-Route Transit System Summaries

St. Johns County Council on Aging, Inc. (Sunshine Bus)

180 Marine Street
 St. Augustine, FL 32084
 (904) 209-3716
www.sunshinebus.net



The Sunshine Bus Company operates under contract by St. Johns County Council on Aging, Inc. Services provided include fixed-route motorbus and demand-response operations. 2022 and 2023 data for the motorbus mode are shown below. The Sunshine Bus Company operates a deviated fixed-route service. St. Johns County is an NTD reduced reporter and some data are not available.

		2022	2023
GENERAL INFORMATION	Service Area Population	273,425	273,425
	Service Area Population Density	455.7	455.7
	Operating Expense	\$1,810,192	\$1,784,704
	Operating Revenue	\$46,509	\$118,278
SERVICE SUPPLIED	Total Annual Revenue Miles	659,686	663,827
	Total Annual Revenue Hours	36,492	37,241
	Total Revenue Vehicles	9	9
	Peak Vehicles	9	9
	Route Miles	n/a	n/a
SERVICE USAGE	Annual Passenger Trips	127,131	103,290
	Annual Passenger Miles	n/a	n/a
	Average Trip Length	n/a	n/a
QUALITY OF SERVICE	Resident Access to Transit	25.52%	24.59%
	Weekday Span of Service (hours)	n/a	n/a
COST EFFICIENCY	Operating Expense per Revenue Mile	\$2.74	\$2.69
	Operating Expense per Revenue Hour	\$49.61	\$47.92
	Operating Revenue per Operating Expense	2.57%	6.63%
	Passenger Trips per Employee FTE	n/a	n/a
COST EFFECTIVENESS	Operating Expense per Passenger Trip	\$14.24	\$17.28
	Operating Expense per Passenger Mile	n/a	n/a
	Operating Expense per Capita	\$6.62	\$6.53
	Farebox Recovery Ratio	2.57%	3.18%
	Average Fare	\$0.37	\$0.55
SERVICE EFFECTIVENESS	Passenger Trips per Revenue Mile	0.19	0.16
	Passenger Trips per Revenue Hour	3.48	2.77
	Passenger Trips per Capita	0.46	0.38
	Revenue Miles Between Safety Incidents	n/a	n/a
	Revenue Miles Between Failures	n/a	n/a

Florida's Urban Fixed-Route Transit System Summaries

St. Lucie County (Area Regional Transit)

2300 Virginia Avenue
Fort Pierce, FL 34982
(772) 462-1100

www.stlucieco.gov/departments-and-services/area-regional-transit



St. Lucie County contracts to provide Area Regional Transit (ART), a demand-response system, and the Treasure Coast Connector, a regional fixed-route bus systems operating throughout St. Lucie County and connecting to Martin County. The data shown below represent the fixed-route services for 2022 and 2023.

		2022	2023
GENERAL INFORMATION	Service Area Population	336,584	358,704
	Service Area Population Density	588.4	627.1
	Operating Expense	\$3,303,732	\$3,175,023
	Operating Revenue	\$100,010	\$94,865
SERVICE SUPPLIED	Total Annual Revenue Miles	522,913	551,977
	Total Annual Revenue Hours	33,848	35,887
	Total Revenue Vehicles	55	55
	Peak Vehicles	13	13
	Route Miles	172.0	172.0
SERVICE USAGE	Annual Passenger Trips	443,629	548,960
	Annual Passenger Miles	1,977,712	2,304,093
	Average Trip Length	4.5	4.2
QUALITY OF SERVICE	Resident Access to Transit	36.87%	36.08%
	Weekday Span of Service (hours)	15.22	15.22
COST EFFICIENCY	Operating Expense per Revenue Mile	\$6.32	\$5.75
	Operating Expense per Revenue Hour	\$97.60	\$88.47
	Operating Revenue per Operating Expense	3.03%	2.99%
	Passenger Trips per Employee FTE	n/a	n/a
COST EFFECTIVENESS	Operating Expense per Passenger Trip	\$7.45	\$5.78
	Operating Expense per Passenger Mile	\$1.67	\$1.38
	Operating Expense per Capita	\$9.82	\$8.85
	Farebox Recovery Ratio	0.00%	0.00%
	Average Fare	\$0.00	\$0.00
SERVICE EFFECTIVENESS	Passenger Trips per Revenue Mile	0.85	0.99
	Passenger Trips per Revenue Hour	13.11	15.30
	Passenger Trips per Capita	1.32	1.53
	Revenue Miles Between Safety Incidents	n/a	n/a
	Revenue Miles Between Failures	6,536	8,762

Florida's Urban Fixed-Route Transit System Summaries

South Florida Regional Transportation Authority (Tri-Rail)

801 NW 33rd Street
 Pompano Beach, FL 33064
 (954) 942-7245
www.tri-rail.com



The South Florida Regional Transportation Authority is an independent authority established by the Florida Legislature. A nine-member appointed Board of Directors governs the SFRTA. The SFRTA operates and manages the commuter rail system, Tri-Rail, as well as select motorbus services throughout Broward, Miami-Dade and Palm Beach counties. This page shows 2022 and 2023 data for these services. In 2022, 92 percent of the annual passenger trips were on the commuter rail mode (3,041,459), while the remainder were for bus services (278,901). In 2023, 91 percent of the trips were commuter rail trips (3,735,897) and 9 percent were bus trips (386,169).

		2022	2023
GENERAL INFORMATION	Service Area Population	133,588	133,588
	Service Area Population Density	4,174.6	4,174.6
	Operating Expense	\$113,327,362	\$123,920,818
	Operating Revenue	\$9,884,804	\$16,228,543
SERVICE SUPPLIED	Total Annual Revenue Miles	3,695,010	3,635,977
	Total Annual Revenue Hours	134,536	132,701
	Total Revenue Vehicles	60	62
	Peak Vehicles	45	46
	Route Miles	148.5	148.54
SERVICE USAGE	Annual Passenger Trips	3,320,360	4,122,066
	Annual Passenger Miles	83,858,370	106,697,798
	Average Trip Length	25.3	25.9
QUALITY OF SERVICE	Resident Access to Transit	4.97%	3.79%
	Weekday Span of Service (hours)	19.58	19.58
COST EFFICIENCY	Operating Expense per Revenue Mile	\$30.67	\$34.08
	Operating Expense per Revenue Hour	\$842.36	\$933.83
	Operating Revenue per Operating Expense	8.72%	13.10%
	Passenger Trips per Employee FTE	n/a	n/a
COST EFFECTIVENESS	Operating Expense per Passenger Trip	\$34.13	\$30.06
	Operating Expense per Passenger Mile	\$1.35	\$1.16
	Operating Expense per Capita	\$848.33	\$927.63
	Farebox Recovery Ratio	7.91%	9.99%
	Average Fare	\$2.70	\$3.00
SERVICE EFFECTIVENESS	Passenger Trips per Revenue Mile	0.90	1.13
	Passenger Trips per Revenue Hour	24.68	31.06
	Passenger Trips per Capita	24.86	30.86
	Revenue Miles Between Safety Incidents	n/a	n/a
	Revenue Miles Between Failures	27,993	32,464

Florida's Urban Fixed-Route Transit System Summaries

Space Coast Area Transit (SCAT)

401 South Varr Avenue
Cocoa, FL 32922
(321) 635-7815
www.321transit.com



Space Coast Area Transit is a department of Brevard County. The department is governed by the five-member Brevard County Commission. Space Coast provides transit service throughout Brevard County via fixed-route motorbus services, demand-response services, and vanpool services. 2022 and 2023 data representing Space Coast's motorbus and vanpool services are shown on this page.

		2022	2023
GENERAL INFORMATION	Service Area Population	622,159	643,979
	Service Area Population Density	399.6	413.6
	Operating Expense	\$11,125,588	\$12,447,860
	Operating Revenue	\$1,373,381	\$1,459,074
SERVICE SUPPLIED	Total Annual Revenue Miles	2,425,249	2,447,143
	Total Annual Revenue Hours	115,844	116,688
	Total Revenue Vehicles	96	94
	Peak Vehicles	54	55
	Route Miles	321.0	323.0
SERVICE USAGE	Annual Passenger Trips	1,678,396	1,773,783
	Annual Passenger Miles	10,888,712	11,276,220
	Average Trip Length	6.5	6.4
QUALITY OF SERVICE	Resident Access to Transit	63.43%	63.63%
	Weekday Span of Service (hours)	18.42	18.42
COST EFFICIENCY	Operating Expense per Revenue Mile	\$4.59	\$5.09
	Operating Expense per Revenue Hour	\$96.04	\$106.68
	Operating Revenue per Operating Expense	12.34%	11.72%
	Passenger Trips per Employee FTE	18,707	16,601
COST EFFECTIVENESS	Operating Expense per Passenger Trip	\$6.63	\$7.02
	Operating Expense per Passenger Mile	\$1.02	\$1.10
	Operating Expense per Capita	\$17.88	\$19.33
	Farebox Recovery Ratio	9.27%	8.94%
	Average Fare	\$0.61	\$0.63
SERVICE EFFECTIVENESS	Passenger Trips per Revenue Mile	0.69	0.72
	Passenger Trips per Revenue Hour	14.49	15.20
	Passenger Trips per Capita	2.7	2.75
	Revenue Miles Between Safety Incidents	n/a	n/a
	Revenue Miles Between Failures	44,095	58,265

Florida's Urban Fixed-Route Transit System Summaries

StarMetro (Tallahassee)

555 Appleyard Drive
Tallahassee, FL 32304
(850) 891-5200

www.talgov.com/starmetro



StarMetro is a department of the City of Tallahassee government. It is governed by a Board of Directors that is comprised of four elected commissioners and one elected mayor. StarMetro serves the City of Tallahassee by providing fixed-route motorbus service and demand-response service to its community. Evening, weekend, and holiday demand-response services are provided via contract. StarMetro's 2022 and 2023 motorbus data are provided directly and by contract.

		2022	2023
GENERAL INFORMATION	Service Area Population	196,169	196,169
	Service Area Population Density	1,904.6	1,904.6
	Operating Expense	\$21,058,124	\$23,894,774
	Operating Revenue	\$5,602,254	\$5,659,077
SERVICE SUPPLIED	Total Annual Revenue Miles	1,966,644	1,936,736
	Total Annual Revenue Hours	175,888	173,769
	Total Revenue Vehicles	69	69
	Peak Vehicles	57	57
	Route Miles	284.6	284.6
SERVICE USAGE	Annual Passenger Trips	2,286,178	2,466,505
	Annual Passenger Miles	7,840,667	9,534,619
	Average Trip Length	3.4	3.9
QUALITY OF SERVICE	Resident Access to Transit	58.12%	59.27%
	Weekday Span of Service (hours)	17.87	17.87
COST EFFICIENCY	Operating Expense per Revenue Mile	\$10.71	\$12.34
	Operating Expense per Revenue Hour	\$119.72	\$137.51
	Operating Revenue per Operating Expense	26.60%	23.68%
	Passenger Trips per Employee FTE	13,302	14,132
COST EFFECTIVENESS	Operating Expense per Passenger Trip	\$9.21	\$9.69
	Operating Expense per Passenger Mile	\$2.69	\$2.51
	Operating Expense per Capita	\$107.35	\$121.81
	Farebox Recovery Ratio	26.57%	23.68%
	Average Fare	\$2.45	\$2.29
SERVICE EFFECTIVENESS	Passenger Trips per Revenue Mile	1.16	1.27
	Passenger Trips per Revenue Hour	13.00	14.19
	Passenger Trips per Capita	11.65	12.57
	Revenue Miles Between Safety Incidents	n/a	276,677
	Revenue Miles Between Failures	3,569	3,272

Florida's Urban Fixed-Route Transit System Summaries

SunRail (Central Florida Commuter Rail)

801 SunRail Drive
 Sanford, FL 32771
 (321) 257-7174
www.SunRail.com



SunRail is a commuter rail service that began operating in May 2014. The service connects Orange and Volusia Counties through Downtown Orlando. Sunrail is overseen by the five-member Central Florida Commuter Rail Commission Governing Board. The data available for 2022 and 2023 are shown below.

		2022	2023
GENERAL INFORMATION	Service Area Population	309,193	316,086
	Service Area Population Density	2,810.8	2,873.5
	Operating Expense	\$63,147,846	\$66,113,166
	Operating Revenue	\$7,294,335	\$8,128,485
SERVICE SUPPLIED	Total Annual Revenue Miles	1,007,930	959,285
	Total Annual Revenue Hours	36,282	34,664
	Total Revenue Vehicles	33	33
	Peak Vehicles	23	21
	Route Miles	97.9	97.9
SERVICE USAGE	Annual Passenger Trips	868,700	1,001,878
	Annual Passenger Miles	14,803,269	16,823,179
	Average Trip Length	17.0	16.8
QUALITY OF SERVICE	Resident Access to Transit	6.31%	6.50%
	Weekday Span of Service (hours)	18.28	18.28
COST EFFICIENCY	Operating Expense per Revenue Mile	\$62.65	\$68.92
	Operating Expense per Revenue Hour	\$1,740.47	\$1,907.26
	Operating Revenue per Operating Expense	11.55%	12.29%
	Passenger Trips per Employee FTE	n/a	n/a
COST EFFECTIVENESS	Operating Expense per Passenger Trip	\$72.69	\$65.99
	Operating Expense per Passenger Mile	\$4.27	\$3.93
	Operating Expense per Capita	\$204.23	\$209.16
	Farebox Recovery Ratio	2.97%	3.17%
	Average Fare	\$2.16	\$2.09
SERVICE EFFECTIVENESS	Passenger Trips per Revenue Mile	0.86	1.04
	Passenger Trips per Revenue Hour	23.94	28.90
	Passenger Trips per Capita	2.81	3.17
	Revenue Miles Between Safety Incidents	n/a	n/a
	Revenue Miles Between Failures	77,533	50,489

Florida's Urban Fixed-Route Transit System Summaries

SunTran (Ocala/Marion)

1805 NE 30th Avenue, Building 900
 Ocala, FL 34470
 (352) 401-6999
www.suntran.org



SunTran is governed by the Ocala/Marion MPO and provides purchased fixed-route motorbus services on six routes in Ocala and Silver Springs Shores. Contracted demand-response services are also provided. 2022 and 2023 data for SunTran's motorbus services are shown below. SunTran is an NTD reduced reporter and some data are not available.

		2022	2023
GENERAL INFORMATION	Service Area Population	86,589	86,589
	Service Area Population Density	1,396.6	1,396.6
	Operating Expense	\$3,219,336	\$2,882,295
	Operating Revenue	\$145,866	\$211,989
SERVICE SUPPLIED	Total Annual Revenue Miles	492,866	496,759
	Total Annual Revenue Hours	33,031	33,767
	Total Revenue Vehicles	7	7
	Peak Vehicles	7	7
	Route Miles	n/a	n/a
SERVICE USAGE	Annual Passenger Trips	189,289	231,180
	Annual Passenger Miles	n/a	n/a
	Average Trip Length	n/a	n/a
QUALITY OF SERVICE	Resident Access to Transit	22.20%	21.93%
	Weekday Span of Service (hours)	n/a	n/a
COST EFFICIENCY	Operating Expense per Revenue Mile	\$6.53	\$5.80
	Operating Expense per Revenue Hour	\$97.46	\$85.36
	Operating Revenue per Operating Expense	4.53%	7.35%
	Passenger Trips per Employee FTE	n/a	n/a
COST EFFECTIVENESS	Operating Expense per Passenger Trip	\$17.01	\$12.47
	Operating Expense per Passenger Mile	n/a	n/a
	Operating Expense per Capita	\$37.18	\$33.29
	Farebox Recovery Ratio	4.45%	6.05%
	Average Fare	\$0.76	\$0.75
SERVICE EFFECTIVENESS	Passenger Trips per Revenue Mile	0.38	0.47
	Passenger Trips per Revenue Hour	5.73	6.85
	Passenger Trips per Capita	2.19	2.67
	Revenue Miles Between Safety Incidents	n/a	n/a
	Revenue Miles Between Failures	n/a	n/a

Florida's Urban Fixed-Route Transit System Summaries

County of Volusia (VOTRAN)

950 Big Tree Road
 South Daytona, FL 32119
 (386) 756-7496
www.votran.org



VOTRAN is funded through the General Fund of Volusia County. It is governed by a Board of Directors that is comprised of seven County Council members. VOTRAN provides public transportation services throughout Volusia County via fixed-route motorbus services, paratransit services, and vanpool services. 2022 and 2023 data for VOTRAN's motorbus and vanpool services are shown below.

		2022	2023
GENERAL INFORMATION	Service Area Population	494,593	494,593
	Service Area Population Density	409.8	409.8
	Operating Expense	\$16,107,029	\$16,142,898
	Operating Revenue	\$2,905,295	\$2,906,029
SERVICE SUPPLIED	Total Annual Revenue Miles	3,125,325	2,870,539
	Total Annual Revenue Hours	193,188	174,727
	Total Revenue Vehicles	86	87
	Peak Vehicles	72	69
	Route Miles	597.5	597.6
SERVICE USAGE	Annual Passenger Trips	2,072,039	2,048,830
	Annual Passenger Miles	9,533,717	17,265,273
	Average Trip Length	4.6	8.4
QUALITY OF SERVICE	Resident Access to Transit	55.83%	43.39%
	Weekday Span of Service (hours)	20.10	20.08
COST EFFICIENCY	Operating Expense per Revenue Mile	\$5.15	\$5.62
	Operating Expense per Revenue Hour	\$83.37	\$92.39
	Operating Revenue per Operating Expense	18.04%	18.00%
	Passenger Trips per Employee FTE	11,636	12,753
COST EFFECTIVENESS	Operating Expense per Passenger Trip	\$7.77	\$7.88
	Operating Expense per Passenger Mile	\$1.69	\$0.94
	Operating Expense per Capita	\$32.57	\$32.64
	Farebox Recovery Ratio	12.83%	12.27%
	Average Fare	\$1.00	\$0.97
SERVICE EFFECTIVENESS	Passenger Trips per Revenue Mile	0.66	0.71
	Passenger Trips per Revenue Hour	10.73	11.73
	Passenger Trips per Capita	4.19	4.14
	Revenue Miles Between Safety Incidents	1,562,663	956,846
	Revenue Miles Between Failures	5,652	3,124

Florida's Urban Fixed-Route Transit System Summaries

FDOT District One Commute Connector

801 N Broadway Ave.
 Bartow, FL 33830
 (800) 292-3368
www.swflroads.com



In FY 2021, FDOT District One's Modal Development Office began contracting to provide vanpool services, known as Commute Connector, within the district. Trips have been provided in Collier, Hardee, Lee, Manatee, Polk, and Sarasota Counties. Commute Connector's data for 2022 and 2023 are shown below. Commute Connector is a reduced NTD reporter and some data are not available.

		2022	2023
GENERAL INFORMATION	Service Area Population	2,179,299	2,889,349
	Service Area Population Density	1,690.7	2,241.5
	Operating Expense	\$313,087	\$283,237
	Operating Revenue	\$325,223	\$291,584
SERVICE SUPPLIED	Total Annual Revenue Miles	524,680	402,755
	Total Annual Revenue Hours	16,238	9,966
	Total Revenue Vehicles	28	26
	Peak Vehicles	28	26
	Route Miles	n/a	n/a
SERVICE USAGE	Annual Passenger Trips	330,512	61,781
	Annual Passenger Miles	n/a	n/a
	Average Trip Length	n/a	n/a
QUALITY OF SERVICE	Resident Access to Transit	n/a	n/a
	Weekday Span of Service (hours)	n/a	n/a
COST EFFICIENCY	Operating Expense per Revenue Mile	\$0.60	\$0.70
	Operating Expense per Revenue Hour	\$19.28	\$28.42
	Operating Revenue per Operating Expense	103.88%	102.95%
	Passenger Trips per Employee FTE	n/a	n/a
COST EFFECTIVENESS	Operating Expense per Passenger Trip	\$0.95	\$4.58
	Operating Expense per Passenger Mile	n/a	n/a
	Operating Expense per Capita	\$0.14	\$0.10
	Farebox Recovery Ratio	103.88%	102.95%
	Average Fare	\$0.98	\$4.72
SERVICE EFFECTIVENESS	Passenger Trips per Revenue Mile	0.63	0.15
	Passenger Trips per Revenue Hour	20.35	6.20
	Passenger Trips per Capita	0.15	0.02
	Revenue Miles Between Safety Incidents	n/a	n/a
	Revenue Miles Between Failures	n/a	n/a

Florida's Urban Fixed-Route Transit System Summaries

Tampa Bay Area Regional Transportation Authority (TBARTA)

4350 W. Cypress Street, Suite 700
 Tampa, FL 33607
 (813) 282-8200
www.tbarta.com



The statewide totals on page 5 also include vanpool data provided by the Tampa Bay Regional Transportation Authority (TBARTA). TBARTA focuses its services in Hernando, Hillsborough, Manatee, Pasco, and Pinellas Counties. 2022 and 2023 data for TBARTA's vanpool services are shown below. TBARTA ceased operations in December 2023. Vanpool trips continue to be provided in the Tampa region by Commute Tampa Bay.

		2022	2023
GENERAL INFORMATION	Service Area Population	3,257,481	3,257,481
	Service Area Population Density	1,939.0	1,939.0
	Operating Expense	\$2,247,520	\$1,917,403
	Operating Revenue	\$1,943,425	\$3,420,877
SERVICE SUPPLIED	Total Annual Revenue Miles	2,908,813	3,394,267
	Total Annual Revenue Hours	72,403	86,390
	Total Revenue Vehicles	193	212
	Peak Vehicles	189	212
	Route Miles	n/a	n/a
SERVICE USAGE	Annual Passenger Trips	303,845	393,283
	Annual Passenger Miles	9,916,271	11,813,691
	Average Trip Length	32.6	30.0
QUALITY OF SERVICE	Resident Access to Transit	n/a	n/a
	Weekday Span of Service (hours)	13.00	13.00
COST EFFICIENCY	Operating Expense per Revenue Mile	\$0.77	\$0.56
	Operating Expense per Revenue Hour	\$31.04	\$22.19
	Operating Revenue per Operating Expense	86.47%	178.41%
	Passenger Trips per Employee FTE	n/a	n/a
COST EFFECTIVENESS	Operating Expense per Passenger Trip	\$7.40	\$4.88
	Operating Expense per Passenger Mile	\$0.23	\$0.16
	Operating Expense per Capita	\$0.69	\$0.59
	Farebox Recovery Ratio	86.47%	126.58%
	Average Fare	\$6.40	\$6.17
SERVICE EFFECTIVENESS	Passenger Trips per Revenue Mile	0.10	0.12
	Passenger Trips per Revenue Hour	4.20	4.55
	Passenger Trips per Capita	0.09	0.12
	Revenue Miles Between Safety Incidents	727,203	3,394,267
	Revenue Miles Between Failures	242,401	147,577

Florida Transit System Summary 2022 & 2023

General Information

System	Service Area Population		Service Area Population Density		Operating Expense		Operating Revenue	
	2022	2023	2022	2023	2022	2023	2022	2023
Bayway Transit (Bay County)	179,168	179,168	236.37	236.37	\$3,630,555	\$3,421,179	\$531,381	\$501,098
Breeze Transit (Sarasota County)	517,423	527,097	848.23	887.37	\$17,343,280	\$23,266,539	\$1,094,985	\$1,772,702
Broward County Transit	1,930,983	1,944,375	4,511.64	4,542.93	\$159,297,578	\$163,338,781	\$28,855,007	\$33,793,873
Citrus County Transit*	30,858	30,858	629.76	629.76	\$589,294	\$679,250	\$1,644	\$2,209
Collier Area Transit	384,902	384,902	190.08	190.08	\$7,869,565	\$8,825,391	\$907,658	\$946,982
Escambia County Area Transit	390,172	241,661	1,483.54	1,278.63	\$9,342,156	\$10,114,732	\$986,495	\$1,671,313
Gainesville Regional Transit System	163,990	199,300	2,157.76	1,880.19	\$25,896,004	\$26,082,441	\$15,017,676	\$16,290,653
Hernando County (TransHernando Express)*	119,384	119,384	1,341.39	1,341.39	\$2,560,754	\$2,403,323	\$104,872	\$131,248
Hillsborough Area Regional Transit	1,450,191	1,102,787	1,166.69	2,638.25	\$91,557,572	\$86,592,337	\$11,935,332	\$11,792,323
Indian River County (GoLine)	163,662	166,316	754.20	745.81	\$3,730,226	\$4,072,838	\$32,151	\$66,609
Jacksonville Transportation Authority	1,247,374	1,264,452	913.16	699.75	\$110,294,201	\$121,446,736	\$8,138,524	\$7,937,585
Lake County Public Transp. (LakeXpress)	97,497	97,497	1,373.20	1,373.20	\$3,563,644	\$4,220,117	\$227,868	\$423,538
Lakeland Area Mass Transit District	724,777	819,629	9,412.69	10,644.53	\$13,050,903	\$15,206,287	\$731,365	\$1,190,718
Lee County Transit	802,178	802,178	978.27	978.27	\$19,343,652	\$19,510,056	\$3,651,009	\$3,864,236
LYNX Transit	2,289,420	2,296,523	901.35	801.86	\$118,063,153	\$143,366,681	\$21,723,394	\$29,231,247
Manatee County Area Transit	399,710	439,566	537.97	591.61	\$10,846,687	\$11,337,516	\$816,773	\$183,320
Martin County (MARTY)	159,942	159,942	2,460.65	2,460.65	\$2,649,129	\$2,834,095	\$115,135	\$132,554
Miami-Dade Transit	2,701,767	2,701,767	8,829.30	8,829.30	\$554,131,400	\$649,000,281	\$86,814,604	\$139,378,830
Okaloosa County Transit (The WAVE)	196,512	211,668	1,637.60	1,156.66	\$1,561,854	\$2,057,439	\$77,180	\$82,929
Palm Beach County (Palm Tran)	1,497,987	1,497,987	760.40	760.40	\$74,033,662	\$74,392,851	\$8,887,089	\$10,039,348
Pasco County Public Transp. (GoPasco)	584,067	584,067	781.88	781.88	\$8,091,598	\$9,052,024	\$882,238	\$948,637
Pinellas Suncoast Transit Authority	1,100,607	1,102,307	3,620.42	3,626.01	\$84,912,160	\$101,094,081	\$7,686,124	\$10,089,514
St. Johns County (Sunshine Bus)*	273,425	273,425	455.71	455.71	\$1,810,192	\$1,784,704	\$46,509	\$118,278
St. Lucie County (Area Regional Transit)	336,584	358,704	588.43	627.10	\$3,303,732	\$3,175,023	\$100,010	\$94,865
S. FL Regional Transp. Authority (Tri-Rail)	133,588	133,588	4,174.63	4,174.63	\$113,327,362	\$123,920,818	\$9,884,804	\$16,228,543
Space Coast Area Transit	622,159	643,979	399.59	413.60	\$11,125,588	\$12,447,860	\$1,373,381	\$1,459,074
StarMetro (Tallahassee)	196,169	196,169	1,904.55	1,904.55	\$21,058,124	\$23,894,774	\$5,602,254	\$5,659,077
SunRail (Central Florida Commuter Rail)	309,193	316,086	2,810.85	2,873.51	\$63,147,846	\$66,113,166	\$7,294,335	\$8,128,485
SunTran (Ocala)*	86,589	86,589	1,396.60	1,396.60	\$3,219,336	\$2,882,295	\$145,866	\$211,989
Volusia County dba VOTRAN	494,593	494,593	409.77	409.77	\$16,107,029	\$16,142,898	\$2,905,295	\$2,906,029
FDOT DI Vanpools - Commute Connector*	2,179,299	2,889,349	1,691	2,242	\$313,087	\$283,237	\$325,223	\$291,584
TBARTA Vanpools - Commute Tampa Bay	3,257,481	3,257,481	1,938.98	1,690.70	\$2,247,520	\$1,917,403	\$1,943,425	\$3,420,877

The data shown in this table represent closed-out, validated numbers as of September 2024. However, it is possible that some figures may be updated in the subsequent reporting year.

*Not all data are available for NTD Reduced Reporters.

Florida Transit System Summary 2022 & 2023

Service Supplied

System	Total Annual Revenue Miles		Total Annual Revenue Hours		Total Revenue Vehicles		Peak Vehicles		Route Miles	
	2022	2023	2022	2023	2022	2023	2022	2023	2022	2023
Bayway Transit (Bay County)	494,953	482,464	39,737	39,048	14	17	12	12	126.00	126.30
Breeze Transit (Sarasota County)	2,044,964	2,021,970	147,067	144,861	43	43	33	33	296.20	293.70
Broward County Transit	15,919,933	15,722,862	1,427,435	1,258,668	486	485	349	342	1,170.40	1,304.80
Citrus County Transit*	195,398	191,722	9,961	9,870	4	4	4	4	n/a	n/a
Collier Area Transit	1,381,925	1,366,218	72,467	73,856	30	31	22	19	435.20	456.00
Escambia County Area Transit	1,208,652	1,199,581	87,563	88,532	49	45	45	32	429.00	429.00
Gainesville Regional Transit System	3,295,298	3,156,550	269,576	254,303	152	127	107	99	253.20	253.50
Hernando County (TransHernando Express)*	553,508	554,483	28,603	28,575	7	7	7	7	n/a	n/a
Hillsborough Area Regional Transit	6,667,991	6,709,273	558,479	552,954	143	140	103	104	1,002.50	1,002.50
Indian River County (GoLine)	894,712	943,981	49,880	50,614	20	20	14	14	342.00	348.00
Jacksonville Transportation Authority	7,924,284	8,103,240	580,556	586,248	235	235	125	132	1,307.74	1,657.44
Lake County Public Transp. (LakeXpress)	548,750	620,827	33,196	37,212	17	17	10	12	173.80	212.70
Lakeland Area Mass Transit District	1,790,750	2,084,113	109,890	128,447	51	49	41	44	761.30	1,065.70
Lee County Transit	2,851,565	2,650,181	194,635	174,727	76	64	45	41	545.00	538.00
LYNX Transit	17,049,710	17,078,335	1,199,635	1,204,773	495	489	389	402	2,095.44	2,680.40
Manatee County Area Transit	1,478,881	1,388,490	101,597	95,011	41	41	25	25	306.00	398.00
Martin County (MARTY)	597,350	605,864	29,760	30,110	14	14	9	9	164.00	164.00
Miami-Dade Transit	37,809,347	38,038,685	2,383,340	2,407,731	1,329	1,196	1,007	958	2,413.79	2,417.56
Okaloosa County Transit (The WAVE)	377,166	384,815	29,207	29,809	17	17	10	10	229.00	230.00
Palm Beach County (Palm Tran)	7,296,517	7,388,404	503,886	510,830	143	143	116	117	902.00	993.00
Pasco County Public Transp. (GoPasco)	1,486,346	1,444,853	89,392	86,878	36	39	25	22	390.00	390.00
Pinellas Suncoast Transit Authority	9,229,010	9,800,838	671,199	701,340	238	229	183	194	875.60	896.20
St. Johns County (Sunshine Bus)*	659,686	663,827	36,492	37,241	9	9	9	9	n/a	n/a
St. Lucie County (Area Regional Transit)	522,913	551,977	33,848	35,887	55	55	13	13	172.00	172.00
S. FL Regional Transp. Authority (Tri-Rail)	3,695,010	3,635,977	134,536	132,701	60	62	45	46	148.54	148.54
Space Coast Area Transit	2,425,249	2,447,143	115,844	116,688	96	94	54	55	321.00	323.00
StarMetro (Tallahassee)	1,966,644	1,936,736	175,888	173,769	69	69	57	57	284.60	284.60
SunRail (Central Florida Commuter Rail)	1,007,930	959,285	36,282	34,664	33	33	23	21	97.94	97.94
SunTran (Ocala)*	492,866	496,759	33,031	33,767	7	7	7	7	n/a	n/a
Volusia County dba VOTRAN	3,125,325	2,870,539	193,188	174,727	86	87	72	69	597.50	597.60
FDOT DI Vanpools - Commute Connector*	524,680	402,755	16,238	9,966	28	26	28	26	n/a	n/a
TBARTA Vanpools - Commute Tampa Bay	2,908,813	3,394,267	72,403	86,390	193	212	189	212	n/a	n/a

The data shown in this table represent closed-out, validated numbers as of September 2024. However, it is possible that some figures may be updated in the subsequent reporting year.

*Not all data are available for NTD Reduced Reporters.

Florida Transit System Summary 2022 & 2023

Service Usage and Quality of Service

System	Annual Passenger Trips		Annual Passenger Miles		Avg. Trip (miles)		Resident Access to Transit		Weekday Span of Service (hrs)	
	2022	2023	2022	2023	2022	2023	2022	2023	2022	2023
Bayway Transit (Bay County)	303,829	348,607	1,845,467	2,243,430	6.07	6.44	44.22%	42.07%	14.00	14.00
Breeze Transit (Sarasota County)	1,688,330	1,736,651	8,025,219	8,150,205	4.75	4.69	59.28%	59.82%	18.48	18.48
Broward County Transit	21,159,241	23,611,038	95,285,231	111,036,418	4.50	4.70	99.79%	99.91%	21.03	21.43
Citrus County Transit*	15,449	23,817	n/a	n/a	n/a	n/a	28.93%	29.51%	n/a	n/a
Collier Area Transit	662,396	722,918	4,837,664	6,649,464	7.30	9.20	54.79%	54.19%	17.75	18.23
Escambia County Area Transit	733,141	781,415	3,592,391	3,842,679	4.90	4.92	58.71%	59.72%	18.98	18.98
Gainesville Regional Transit System	4,321,643	5,126,240	14,809,736	17,503,625	3.43	3.41	60.80%	61.36%	17.75	18.75
Hernando County (TransHernando Express)*	122,298	134,242	n/a	n/a	n/a	n/a	40.40%	39.66%	n/a	n/a
Hillsborough Area Regional Transit	10,751,987	12,343,782	50,771,166	51,227,262	4.72	4.15	52.27%	52.28%	21.22	20.75
Indian River County (GoLine)	1,204,772	1,261,556	5,498,505	5,695,674	4.56	4.51	71.15%	69.63%	13.00	13.00
Jacksonville Transportation Authority	5,867,113	6,380,233	30,856,916	34,001,887	5.26	5.33	72.81%	78.31%	22.10	22.25
Lake County Public Transp. (LakeXpress)	199,138	218,604	1,280,457	1,383,763	6.43	6.33	36.93%	31.93%	15.00	15.00
Lakeland Area Mass Transit District	613,383	764,190	3,609,428	4,156,712	5.88	5.44	38.88%	38.71%	15.10	15.00
Lee County Transit	2,057,592	1,525,767	10,891,820	8,088,649	5.29	5.30	50.24%	50.32%	19.58	19.58
LYNX Transit	16,170,764	17,749,325	86,738,741	104,182,902	5.36	5.87	55.31%	54.34%	23.00	23.98
Manatee County Area Transit	1,244,847	1,533,921	6,498,884	6,827,417	5.22	4.45	67.21%	67.09%	17.25	17.25
Martin County (MARTY)	88,904	103,642	692,741	844,948	7.79	8.15	34.74%	35.33%	14.00	14.00
Miami-Dade Transit	54,788,624	76,537,790	286,754,345	395,602,013	5.23	5.17	95.81%	95.53%	24.00	24.00
Okaloosa County Transit (The WAVE)	61,913	57,003	316,738	291,338	5.12	5.11	46.71%	41.46%	13.00	13.00
Palm Beach County (Palm Tran)	6,357,425	7,442,946	35,547,557	39,068,251	5.59	5.25	66.80%	66.60%	18.45	18.45
Pasco County Public Transp. (GoPasco)	559,249	639,587	3,175,127	3,365,676	5.68	5.26	46.16%	45.36%	18.00	18.00
Pinellas Suncoast Transit Authority	8,465,048	9,999,781	45,830,264	52,822,259	5.41	5.28	95.10%	93.60%	20.35	20.25
St. Johns County (Sunshine Bus)*	127,131	103,290	n/a	n/a	n/a	n/a	25.52%	24.59%	n/a	n/a
St. Lucie County (Area Regional Transit)	443,629	548,960	1,977,712	2,304,093	4.46	4.20	36.87%	36.08%	15.22	15.22
S. FL Regional Transp. Authority (Tri-Rail)	3,320,360	4,122,066	83,858,370	106,697,798	25.26	25.88	4.97%	3.79%	19.58	19.58
Space Coast Area Transit	1,678,396	1,773,783	10,888,712	11,276,220	6.49	6.36	63.43%	63.63%	18.42	18.42
StarMetro (Tallahassee)	2,286,178	2,466,505	7,840,667	9,534,619	3.43	3.87	58.12%	59.27%	17.87	17.87
SunRail (Central Florida Commuter Rail)	868,700	1,001,878	14,803,269	16,823,179	17.04	16.79	6.31%	6.50%	18.28	18.28
SunTran (Ocala)*	189,289	231,180	n/a	n/a	n/a	n/a	22.20%	21.93%	n/a	n/a
Volusia County dba VOTRAN	2,072,039	2,048,830	9,533,717	17,265,273	4.60	8.43	55.83%	43.39%	20.10	20.08
FDOT DI Vanpools - Commute Connector*	330,512	61,781	n/a	n/a	n/a	n/a	n/a	n/a	n/a	n/a
TBARTA Vanpools - Commute Tampa Bay	303,845	393,283	9,916,271	11,813,691	32.64	30.04	n/a	n/a	13.00	13.00

The data shown in this table represent closed-out, validated numbers as of September 2024. However, it is possible that some figures may be updated in the subsequent reporting year.

*Not all data are available for NTD Reduced Reporters.

Florida Transit System Summary 2022 & 2023

Cost Efficiency

System	Operating Expense per Revenue Mile		Operating Expense per Revenue Hour		Operating Revenue per Operating Expense		Passenger Trips per Employee FTE**	
	2022	2023	2022	2023	2022	2023	2022	2023
Bayway Transit (Bay County)	\$7.34	\$7.09	\$91.36	\$87.61	14.64%	14.65%	n/a	n/a
Breeze Transit (Sarasota County)	\$8.48	\$11.51	\$117.93	\$160.61	6.31%	7.62%	10,795	10,528
Broward County Transit	\$10.01	\$10.39	\$111.60	\$129.77	18.11%	20.69%	17,654	19,763
Citrus County Transit*	\$3.02	\$3.54	\$59.16	\$68.82	0.28%	0.33%	n/a	n/a
Collier Area Transit	\$5.69	\$6.46	\$108.60	\$119.49	11.53%	10.73%	n/a	n/a
Escambia County Area Transit	\$7.73	\$8.43	\$106.69	\$114.25	10.56%	16.52%	10,556	9,250
Gainesville Regional Transit System	\$7.86	\$8.26	\$96.06	\$102.56	57.99%	62.46%	17,946	20,360
Hernando County (TransHernando Express)*	\$4.63	\$4.33	\$89.53	\$84.11	4.10%	5.46%	n/a	n/a
Hillsborough Area Regional Transit	\$13.73	\$12.91	\$163.94	\$156.60	13.04%	13.62%	15,947	17,970
Indian River County (GoLine)	\$4.17	\$4.31	\$74.78	\$80.47	0.86%	1.64%	n/a	n/a
Jacksonville Transportation Authority	\$13.92	\$14.99	\$189.98	\$207.16	7.38%	6.54%	8,520	8,981
Lake County Public Transp. (LakeXpress)	\$6.49	\$6.80	\$107.35	\$113.41	6.39%	10.04%	n/a	n/a
Lakeland Area Mass Transit District	\$7.29	\$7.30	\$118.76	\$118.39	5.60%	7.83%	4,452	4,786
Lee County Transit	\$6.78	\$7.36	\$99.38	\$111.66	18.87%	19.81%	12,001	8,597
LYNX Transit	\$6.92	\$8.39	\$98.42	\$119.00	18.40%	20.39%	11,824	12,345
Manatee County Area Transit	\$7.33	\$8.17	\$106.76	\$119.33	7.53%	1.62%	14,456	16,798
Martin County (MARTY)	\$4.43	\$4.68	\$89.02	\$94.12	4.35%	4.68%	n/a	n/a
Miami-Dade Transit	\$14.66	\$17.06	\$232.50	\$269.55	15.67%	21.48%	18,981	23,731
Okaloosa County Transit (The WAVE)	\$4.14	\$5.35	\$53.48	\$69.02	4.94%	4.03%	n/a	n/a
Palm Beach County (Palm Tran)	\$10.15	\$10.07	\$146.93	\$145.63	12.00%	13.50%	13,503	14,047
Pasco County Public Transp. (GoPasco)	\$5.44	\$6.27	\$90.52	\$104.19	10.90%	10.48%	5,983	7,547
Pinellas Suncoast Transit Authority	\$9.20	\$10.31	\$126.51	\$144.14	9.05%	9.98%	12,207	14,939
St. Johns County (Sunshine Bus)*	\$2.74	\$2.69	\$49.61	\$47.92	2.57%	6.63%	n/a	n/a
St. Lucie County (Area Regional Transit)	\$6.32	\$5.75	\$97.60	\$88.47	3.03%	2.99%	n/a	n/a
S. FL Regional Transp. Authority (Tri-Rail)	\$30.67	\$34.08	\$842.36	\$933.83	8.72%	13.10%	n/a	n/a
Space Coast Area Transit	\$4.59	\$5.09	\$96.04	\$106.68	12.34%	11.72%	18,707	16,601
StarMetro (Tallahassee)	\$10.71	\$12.34	\$119.72	\$137.51	26.60%	23.68%	13,302	14,132
SunRail (Central Florida Commuter Rail)	\$62.65	\$68.92	\$1,740.47	\$1,907.26	11.55%	12.29%	n/a	n/a
SunTran (Ocala)*	\$6.53	\$5.80	\$97.46	\$85.36	4.53%	7.35%	n/a	n/a
Volusia County dba VOTRAN	\$5.15	\$5.62	\$83.37	\$92.39	18.04%	18.00%	11,636	12,753
FDOT DI Vanpools - Commute Connector*	\$0.60	\$0.70	\$19.28	\$28.42	103.88%	102.95%	n/a	n/a
TBARTA Vanpools - Commute Tampa Bay	\$0.77	\$0.56	\$31.04	\$22.19	86.47%	178.41%	n/a	n/a

The data shown in this table represent closed-out, validated numbers as of September 2024. However, it is possible that some figures may be updated in the subsequent reporting year.

*Not all data are available for NTD Reduced Reporters.

**Employee data not available for contracted services.

Florida Transit System Summary 2022 & 2023

Cost Effectiveness

System	Operating Expense per Passenger Trip		Operating Expense per Passenger Mile		Operating Expense per Capita		Farebox Recovery Ratio		Average Fare	
	2022	2023	2022	2023	2022	2023	2022	2023	2022	2023
Bayway Transit (Bay County)	\$11.95	\$9.81	\$1.97	\$1.53	\$20.26	\$19.09	9.50%	10.74%	\$1.13	\$1.05
Breeze Transit (Sarasota County)	\$10.27	\$13.40	\$2.16	\$2.85	\$33.52	\$44.14	6.09%	5.77%	\$0.60	\$0.77
Broward County Transit	\$7.53	\$6.92	\$1.67	\$1.47	\$82.50	\$84.01	14.05%	15.02%	\$1.06	\$1.04
Citrus County Transit*	\$38.14	\$28.52	n/a	n/a	\$19.10	\$22.01	0.28%	0.33%	\$0.11	\$0.09
Collier Area Transit	\$11.88	\$12.21	\$1.63	\$1.33	\$20.45	\$22.93	9.92%	9.48%	\$1.18	\$1.16
Escambia County Area Transit	\$12.74	\$12.94	\$2.60	\$2.63	\$23.94	\$41.86	7.97%	9.68%	\$1.02	\$1.25
Gainesville Regional Transit System	\$5.99	\$5.09	\$1.75	\$1.49	\$157.91	\$130.87	54.62%	58.70%	\$3.27	\$2.99
Hernando County (TransHernando Express)*	\$20.94	\$17.90	n/a	n/a	\$21.45	\$20.13	3.56%	4.85%	\$0.75	\$0.87
Hillsborough Area Regional Transit	\$8.52	\$7.02	\$1.80	\$1.69	\$63.13	\$78.52	7.98%	9.07%	\$0.68	\$0.64
Indian River County (GoLine)	\$3.10	\$3.23	\$0.68	\$0.72	\$22.79	\$24.49	0.00%	0.05%	\$0.00	\$0.00
Jacksonville Transportation Authority	\$18.80	\$19.03	\$3.57	\$3.57	\$88.42	\$96.05	6.66%	5.71%	\$1.25	\$1.09
Lake County Public Transp. (LakeXpress)	\$17.90	\$19.30	\$2.78	\$3.05	\$36.55	\$43.28	2.73%	2.52%	\$0.49	\$0.49
Lakeland Area Mass Transit District	\$21.28	\$19.90	\$3.62	\$3.66	\$18.01	\$18.55	3.49%	3.72%	\$0.74	\$0.74
Lee County Transit	\$9.40	\$12.79	\$1.78	\$2.41	\$24.11	\$24.32	8.78%	8.51%	\$0.83	\$1.09
LYNX Transit	\$7.30	\$8.08	\$1.36	\$1.38	\$51.57	\$62.43	14.34%	13.12%	\$1.05	\$1.06
Manatee County Area Transit	\$8.71	\$7.39	\$1.67	\$1.66	\$27.14	\$25.79	6.71%	0.87%	\$0.58	\$0.06
Martin County (MARTY)	\$29.80	\$27.35	\$3.82	\$3.35	\$16.56	\$17.72	4.11%	4.68%	\$1.22	\$1.28
Miami-Dade Transit	\$10.11	\$8.48	\$1.93	\$1.64	\$205.10	\$240.21	11.88%	11.73%	\$1.20	\$0.99
Okaloosa County Transit (The WAVE)	\$25.23	\$36.09	\$4.93	\$7.06	\$7.95	\$9.72	3.78%	2.91%	\$0.95	\$1.05
Palm Beach County (Palm Tran)	\$11.65	\$10.00	\$2.08	\$1.90	\$49.42	\$49.66	10.00%	11.80%	\$1.16	\$1.18
Pasco County Public Transp. (GoPasco)	\$14.47	\$14.15	\$2.55	\$2.69	\$13.85	\$15.50	6.56%	6.72%	\$0.95	\$0.95
Pinellas Suncoast Transit Authority	\$10.03	\$10.11	\$1.85	\$1.91	\$77.15	\$91.71	7.42%	6.47%	\$0.74	\$0.65
St. Johns County (Sunshine Bus)*	\$14.24	\$17.28	n/a	n/a	\$6.62	\$6.53	2.57%	3.18%	\$0.37	\$0.55
St. Lucie County (Area Regional Transit)	\$7.45	\$5.78	\$1.67	\$1.38	\$9.82	\$8.85	0.00%	0.00%	\$0.00	\$0.00
S. FL Regional Transp. Authority (Tri-Rail)	\$34.13	\$30.06	\$1.35	\$1.16	\$848.33	\$927.63	7.91%	9.99%	\$2.70	\$3.00
Space Coast Area Transit	\$6.63	\$7.02	\$1.02	\$1.10	\$17.88	\$19.33	9.27%	8.94%	\$0.61	\$0.63
StarMetro (Tallahassee)	\$9.21	\$9.69	\$2.69	\$2.51	\$107.35	\$121.81	26.57%	23.68%	\$2.45	\$2.29
SunRail (Central Florida Commuter Rail)	\$72.69	\$65.99	\$4.27	\$3.93	\$204.23	\$209.16	2.97%	3.17%	\$2.16	\$2.09
SunTran (Ocala)*	\$17.01	\$12.47	n/a	n/a	\$37.18	\$33.29	4.45%	6.05%	\$0.76	\$0.75
Volusia County dba VOTRAN	\$7.77	\$7.88	\$1.69	\$0.94	\$32.57	\$32.64	12.83%	12.27%	\$1.00	\$0.97
FDOT DI Vanpools - Commute Connector*	\$0.95	\$4.58	n/a	n/a	\$0.14	\$0.10	103.88%	102.95%	\$0.98	\$4.72
TBARTA Vanpools - Commute Tampa Bay	\$7.40	\$4.88	\$0.23	\$0.16	\$0.69	\$0.59	86.47%	126.58%	\$6.40	\$6.17

The data shown in this table represent closed-out, validated numbers as of September 2024. However, it is possible that some figures may be updated in the subsequent reporting year.

* Not all data are available for NTD Reduced Reporters.

Florida Transit System Summary 2022 & 2023

Service Effectiveness

System	Passenger Trips per Revenue Mile		Passenger Trips per Revenue Hour		Passenger Trips per Capita		Revenue Miles between Safety Incidents		Revenue Miles between Failures	
	2022	2023	2022	2023	2022	2023	2022	2023	2022	2023
Bayway Transit (Bay County)	0.61	0.72	7.65	8.93	1.70	1.95	247,477	120,616	82,492	53,607
Breeze Transit (Sarasota County)	0.83	0.86	11.48	11.99	3.26	3.29	1,022,482	1,010,985	7,717	6,460
Broward County Transit	1.33	1.50	14.82	18.76	10.96	12.14	241,211	349,397	3,443	3,042
Citrus County Transit*	0.08	0.12	1.55	2.41	0.50	0.77	n/a	n/a	n/a	n/a
Collier Area Transit	0.48	0.53	9.14	9.79	1.72	1.88	n/a	n/a	9,871	19,517
Escambia County Area Transit	0.61	0.65	8.37	8.83	1.88	3.23	241,730	239,916	10,419	5,998
Gainesville Regional Transit System	1.31	1.62	16.03	20.16	26.35	25.72	299,573	242,812	12,250	16,023
Hernando County (TransHernando Express)*	0.22	0.24	4.28	4.70	1.02	1.12	n/a	n/a	n/a	n/a
Hillsborough Area Regional Transit	1.61	1.84	19.25	22.32	7.41	11.19	208,375	181,332	3,670	3,561
Indian River County (GoLine)	1.35	1.34	24.15	24.93	7.36	7.59	n/a	n/a	298,237	314,660
Jacksonville Transportation Authority	0.74	0.79	10.11	10.88	4.70	5.05	495,268	324,130	18,092	16,812
Lake County Public Transp. (LakeXpress)	0.36	0.35	6.00	5.87	2.04	2.24	548,750	620,827	5,716	6,535
Lakeland Area Mass Transit District	0.34	0.37	5.58	5.95	0.85	0.93	895,375	1,042,057	8,778	10,317
Lee County Transit	0.72	0.58	10.57	8.73	2.57	1.90	356,446	203,860	35,205	27,606
LYNX Transit	0.95	1.04	13.48	14.73	7.06	7.73	210,490	187,674	8,829	8,998
Manatee County Area Transit	0.84	1.10	12.25	16.14	3.11	3.49	369,720	173,561	4,143	4,272
Martin County (MARTY)	0.15	0.17	2.99	3.44	0.56	0.65	n/a	n/a	49,779	37,867
Miami-Dade Transit	1.45	2.01	22.99	31.79	20.28	28.33	1,050,260	458,297	3,274	2,907
Okaloosa County Transit (The WAVE)	0.16	0.15	2.12	1.91	0.32	0.27	n/a	n/a	12,572	10,995
Palm Beach County (Palm Tran)	0.87	1.01	12.62	14.57	4.24	4.97	561,271	568,339	10,499	4,550
Pasco County Public Transp. (GoPasco)	0.38	0.44	6.26	7.36	0.96	1.10	1,486,346	n/a	17,084	22,934
Pinellas Suncoast Transit Authority	0.92	1.02	12.61	14.26	7.69	9.07	236,641	257,917	17,380	17,533
St. Johns County (Sunshine Bus)*	0.19	0.16	3.48	2.77	0.46	0.38	n/a	n/a	n/a	n/a
St. Lucie County (Area Regional Transit)	0.85	0.99	13.11	15.30	1.32	1.53	n/a	n/a	6,536	8,762
S. FL Regional Transp. Authority (Tri-Rail)	0.90	1.13	24.68	31.06	24.86	30.86	n/a	n/a	27,993	32,464
Space Coast Area Transit	0.69	0.72	14.49	15.20	2.70	2.75	n/a	2,447,143	44,095	58,265
StarMetro (Tallahassee)	1.16	1.27	13.00	14.19	11.65	12.57	n/a	276,677	3,569	3,272
SunRail (Central Florida Commuter Rail)	0.86	1.04	23.94	28.90	2.81	3.17	n/a	n/a	77,533	50,489
SunTran (Ocala)*	0.38	0.47	5.73	6.85	2.19	2.67	n/a	n/a	n/a	n/a
Volusia County dba VOTRAN	0.66	0.71	10.73	11.73	4.19	4.14	1,562,663	956,846	5,652	3,124
FDOT DI Vanpools - Commute Connector*	0.63	0.15	20.35	6.20	0.15	0.02	n/a	n/a	n/a	n/a
TBARTA Vanpools - Commute Tampa Bay	0.10	0.12	4.20	4.55	0.09	0.12	727,203	3,394,267	242,401	147,577

The data shown in this table represent closed-out, validated numbers as of September 2024. However, it is possible that some figures may be updated in the subsequent reporting year.

* Not all data are available for NTD Reduced Reporters.

Florida Transit Systems' Fixed-Route Fares (as of October 2024)

System Fare Summary

System	Cash Fare		Express Fare		Daily Fare		Weekly Pass		Monthly Pass	
	Regular	Discount	Regular	Discount	Regular	Discount	Regular	Discount	Regular	Discount
Bay Town Trolley	\$1.50	\$0.75	n/a	n/a	\$4.00	n/a	n/a	n/a	\$35.00	n/a
Breeze Transit	\$1.25	\$0.60	n/a	n/a	\$4.00	n/a	\$20.00	\$10.00	\$50.00	\$43.00
Broward County Transit	\$2.00	\$1.00	\$2.65	\$1.30	\$5.00	\$4.00	\$20.00	n/a	\$70.00	\$40.00
Collier Area Transit	\$2.00	\$1.00	\$3.00	\$1.50	\$3.00	\$1.50	n/a	n/a	\$40.00	\$20.00
Escambia County Area Transit	\$1.75	\$0.85	\$2.35	\$1.10	\$5.25	n/a	\$14.50	n/a	\$47.00	\$35.00
Gainesville Regional Transit System	\$1.50	\$0.75	n/a	n/a	\$3.00	n/a	n/a	n/a	\$35.00	\$17.50
Hernando (TheBus)	\$1.25	\$0.60	n/a	n/a	n/a	n/a	\$10.00	\$5.00	\$30.00	\$15.00
Hillsborough Area Regional Transit	\$2.00	\$1.00	\$3.00	\$1.50	\$4.00	\$2.00	n/a	n/a	\$65.00	\$32.50
Indian River (GoLine)	FREE	n/a	n/a	n/a	n/a	n/a	n/a	n/a	n/a	n/a
Jacksonville Transportation Authority	\$1.75	\$0.75	\$2.75	\$2.00	\$4.50	\$1.75	\$10.00	n/a	\$65.00	\$32.00
Lake County Public Transp. (LakeXpress)	\$1.00	\$0.50	n/a	n/a	\$3.00	\$1.50	n/a	n/a	\$30.00	\$15.00
Lakeland Area Mass Transit District	\$1.50	\$0.75	n/a	n/a	\$3.00	\$1.50	\$12.00	n/a	\$47.00	\$31.50
Lee County Transit	\$1.50	\$0.75	n/a	n/a	\$4.00	n/a	\$15.00	\$11.00	\$40.00	\$23.00
LYNX Transit	\$2.00	\$1.00	n/a	n/a	\$4.50	\$2.25	\$16.00	\$8.00	\$50.00	\$25.00
Manatee County Area Transit	FREE	n/a	n/a	n/a	n/a	n/a	n/a	n/a	n/a	n/a
Martin County	\$1.50	\$0.75	\$2.00	\$1.00	\$3.00	n/a	n/a	n/a	n/a	n/a
Miami-Dade Transit	\$2.25	\$1.10*	\$2.65	\$1.30	\$5.65	\$2.80	\$29.25	\$14.60	\$112.50	\$56.25
Okaloosa County Transit (EC Rider)	\$2.00	\$1.00	\$3.00	\$2.00	\$4.00	\$2.00	n/a	n/a	\$40.00	\$20.00
Palm Beach County Transportation Agency	\$2.00	\$1.00	n/a	n/a	\$5.00	\$3.50	n/a	n/a	\$70.00	\$55.00
Pasco County Public Transportation	\$1.50	\$0.75	n/a	n/a	\$3.75	\$1.85	n/a	n/a	\$37.50	\$18.75
Pinellas Suncoast Transit Authority	\$2.25	\$1.10	\$2.25	\$1.10	\$5.00	\$2.50	n/a	n/a	\$70.00	\$35.00
St. Johns County (Sunshine Bus)	\$2.00	\$1.00	n/a	n/a	\$4.00	\$2.00	n/a	n/a	\$30.00	\$15.00
St. Lucie County (Area Regional Transit)	FREE	n/a	n/a	n/a	n/a	n/a	n/a	n/a	n/a	n/a
Space Coast Area Transit	\$1.50	\$0.75	n/a	n/a	n/a	n/a	n/a	n/a	\$42.00	\$21.00
StarMetro (Tallahassee)	\$1.25	\$0.60	n/a	n/a	\$3.00	n/a	\$10.00	\$7.50	\$38.00	\$19.00
SunTran (Ocala)	\$1.50	\$0.75	n/a	n/a	n/a	n/a	n/a	n/a	\$45.00	\$23.00
Volusia County dba VOTRAN	\$1.75	\$0.85	n/a	n/a	\$3.75	\$1.85	\$13.00	\$6.50	\$46.00	\$23.00
S. Florida Regional Transportation Authority	<i>Tiered fare system ranging from \$2.50 to \$8.75 for one-way trips, depending on number of zones traveled.</i>				\$5.00	\$2.50	n/a	n/a	\$110.00	\$55.00
SunRail (Central Florida Commuter Rail)	<i>Tiered fare system ranging from \$2.00 to \$5.00 for one-way trips, depending on number of zones traveled.</i>				n/a	n/a	\$17.00 - \$42.50	\$8.50 - \$21.25	\$56.00 - \$140.00	\$28.00 - \$70.00

* NOTE: Some agencies also provide free rides to seniors, veterans, students, and/or children

Glossary of Terms

Automated Guideway (MG): A fixed-guideway transit system that operates with automated (driverless) individual vehicles or multi-car trains. Service may be on a fixed schedule or in response to a passenger-activated call button.

Bus Rapid Transit (RB): Fixed-route bus systems that either (1) operate their routes predominantly on fixed-guideways (other than on highway HOV or shoulder lanes, such as for commuter bus service) or (2) that operate routes of high-frequency service with the following elements: Substantial transit stations, traffic signal priority or pre-emption, low-floor vehicles or level-platform boarding, and separate branding of the service. High-frequency service is defined as 10-minute peak and 15-minute off-peak headways for at least 14 hours of service operations per day. This mode may include portions of service that are fixed-guideway and non-fixed-guideway.

Commuter Bus (CB): Fixed-route bus systems that are primarily connecting outlying areas with a central city through bus service that operates with at least five miles of continuous closed-door service. This service typically operates using motorcoaches (aka over-the-road buses), and usually features peak scheduling, multiple-trip tickets, and multiple stops in outlying areas with limited stops in the central city.

Commuter Rail (CR): Short-haul rail passenger service operating in metropolitan and suburban areas, whether within or across the geographical boundaries of a state, usually characterized by reduced fare, multiple ride, and commutation tickets and by morning and evening peak period operations.

Demand-Response Service (DR): Any system of transporting individuals, including the provision of designated transportation service by public or private entities, which is not a fixed-route system. This type of service is also known as “paratransit.”

Demand-Response Taxi (DT): A special form of the demand response mode operated through taxicab providers. The mode is always purchased transportation type of service.

Deviated Fixed Route Service: Transit service that operates along a fixed alignment or path at generally fixed times, but may deviate from the route alignment to collect or drop off passengers who have requested the deviation.

Directly Operated (DO): Transportation service provided directly by a transit agency, using their employees to supply the necessary labor to operate the revenue vehicles. This includes instances where an agency’s employees provide purchased transportation (PT) services to the agency through a contractual agreement.

Fixed Guideway: Any public transportation facility that utilizes and occupies a separate right-of-way or rails for the exclusive use of public transportation service including, but not limited to, fixed rail, automated guideway transit, and exclusive facilities for buses and other high-occupancy vehicles.

Heavy Rail (HR): Transit service using rail cars with motive capability, driven by electric power usually drawn from a third rail, configured for passenger traffic, and usually operated on exclusive rights-of-way.

Motorbus (MB): Mode of service involving passenger revenue vehicles operating on fixed routes and schedules on roadways.

Park-and-Ride: Parking garages and/or pavement used for parking passengers’ automobiles, either free or for a fee, while they use transit system facilities. The garages/lots are generally used as collector sites for rail or bus service. They may also serve as collector sites for vanpools or carpools, and may sometimes serve as transit centers.

Purchased Transportation (PT): Transportation service provided to a public agency from a public or private transportation provider based on a written contract. It does not include franchising, licensing operations, management services, or private conventional bus service.

Streetcar Rail (SR): This mode is for rail transit systems operating entire routes predominantly on streets in mixed-traffic. This service typically operates with single-car trains powered by overhead catenaries and with frequent stops.

Vanpool (VP): A transit mode comprised of vans, small buses and other vehicles operating as a ride sharing arrangement, providing transportation to a group of individuals traveling directly between their homes and a regular destination within the same geographical area. The vehicles have a minimum seating capacity of seven persons, including the driver.

GENERAL INFORMATION

Operating Expense: Reported total spending on operations, including administration, maintenance, and operation of service vehicles.

Operating Revenue: All revenues directly generated through the operation of the transit agency. Includes passenger fares, special transit fares, school bus service revenues, freight tariffs, charter service revenues, auxiliary transportation revenues, subsidy from other sectors of operations, and non-transportation revenues.

Service Area Population: A measure of access to transit service in terms of population served. The reporting transit agency determines the service area boundaries and population for most transit services using the definitions contained in the Americans with Disabilities Act of 1990 (ADA). This measure is reported at the system level, not by mode operated.

Service Area Population Density: Represents persons per square mile based on the service area population and service area size reported in the National Transit Database.

SERVICE SUPPLIED

Peak Vehicles: This refers to the number of vehicles operated in maximum (peak) service. It represents the number of revenue vehicles operated to meet the annual maximum service requirement, i.e., the revenue vehicle count during the peak hours of the peak days/weeks of the peak season (typically the rush period). Vehicles operated in maximum service exclude atypical days or one-time special events.

Route Miles: Number of directional route miles as reported in NTD data; defined as the mileage that service operates in each direction over routes traveled by public transportation vehicles in revenue service.

Total Annual Revenue Hours: Total hours of operation by revenue service vehicles in active revenue service.

Total Annual Revenue Miles: Number of annual miles of vehicle operation while in active service (available to pick up revenue passengers). This number is smaller than vehicle miles because of the exclusion of deadhead miles such as vehicle miles from the garage to the start of service, vehicle miles from the end of service to the garage, driver training, and other miscellaneous miles that are not considered to be in direct revenue service.

Total Revenue Vehicles: Number of vehicles available for use by the transit agency to meet the annual maximum service requirement. Total revenue vehicles includes spares, out-of-service vehicles, and vehicles in or awaiting maintenance, but excludes vehicles awaiting sale and emergency contingency vehicles.

SERVICE USAGE

Annual Passenger Miles: Number of annual passenger trips multiplied by the system's average trip length (in miles). This number provides a measure of the total number of passenger miles of transportation service consumed, and is typically derived based on sampling.

Annual Passenger Trips: Annual number of passenger boardings on the transit vehicles. A trip is counted each time a passenger boards a transit vehicle. Thus, if a passenger has to transfer between buses to reach a destination, he/she is counted as making two passenger trips.

Average Trip Length: Annual passenger miles divided by annual passenger trips.

QUALITY OF SERVICE

Resident Access to Transit: Provides the percentage of the population within a half-mile of fixed-route transit. This measure provides refined information compared to what is currently available in the NTD. For example, this measure provides a slightly narrower definition of access than the NTD service area definition which is a three-quarter-mile buffer around fixed routes. In addition, many of the Florida transit agencies that report in the urban NTD report their county populations as their service areas because they also offer county-wide demand-response service in addition to fixed-route services, and service area population is reported by system, not mode, in the NTD. Geographic Information Systems (GIS) were used along with General Transit Feed Specification (GTFS) data and data available from the American Community Survey (ACS) to compute this measure.

Weekday Span of Service: The number of hours that transit service is provided on a representative weekday in the operation of the transit agency. This indicator is determined by computing the number of hours between the values reported in the NTD for average weekday *time service begins* and *time service ends*. For transit agencies with more than one mode, the system total span of service takes into account the hours of operation for all modes and reports the span of hours that any transit service is provided on a typical weekday.

COST EFFICIENCY

Operating Expense Per Revenue Hour: Operating expense divided by total annual revenue hours; a key comparative measure which factors out vehicle speed. This is often important because vehicle speed is strongly influenced by local traffic conditions.

Operating Expense Per Revenue Mile: Operating expense divided by total annual revenue miles; a measure of the efficiency with which service is delivered and is another key comparative indicator.

Operating Revenue Per Operating Expense: Ratio of revenue generated through operation of the transit agency with respect to total operating expense.

Passenger Trips Per Employee FTE: Ratio of total passenger trips to system total full-time equivalents. Another measure of overall labor productivity.

Total Employee FTEs: Total number of payroll employees of the transit agency in terms of full-time equivalents (FTEs). All employees classified as capital are not included in this Handbook.

COST EFFECTIVENESS

Average Fare: Passenger fare revenues divided by the total number of passenger trips.

Farebox Recovery Ratio: Ratio of passenger fares to total operating expenses; an indicator of the share of total operating costs that is covered by the passengers' fares.

Operating Expense Per Capita: Annual operating budget divided by the service area population; a measure of the resource commitment to transit by the community.

Operating Expense Per Passenger Mile: Operating expense divided by the number of passenger miles; takes into account the impact of trip length on performance because some operators provide lengthy trips while others provide mainly shorter trips.

Operating Expense Per Passenger Trip: Operating expenditures divided by the total annual ridership; a measure of the efficiency of transporting riders; one of the key indicators of comparative performance of transit properties since it reflects both the efficiency with which service is delivered and the market demands for the service.

Passenger Fare Revenue: Revenue generated annually from carrying passengers in regularly scheduled service.

SERVICE EFFECTIVENESS

Passenger Trips Per Capita: Average number of transit boardings per person per year. This number is larger in areas where public transportation is emphasized and in areas where there are more transit dependent persons, and is a measure of the extent to which the public utilizes transit in a given service area.

Passenger Trips Per Revenue Hour: The ratio of annual passenger trips to total annual revenue hours of operation; reports on the effectiveness of the service because hours are generally a better representation of the resources consumed in providing service.

Passenger Trips Per Revenue Mile: The ratio of annual passenger trips to total annual revenue miles of service; a key indicator of service effectiveness that is influenced by the levels of demand and the supply of service provided.

Revenue Miles Between Failures: Number of total annual revenue miles divided by the number of revenue vehicle system failures; an indicator of the average frequency of delays because of a problem with the equipment.

Revenue Miles Between Safety Incidents: Number of total annual revenue miles divided by the number of major safety incidents; reports the average interval, in miles, between incidents.

Revenue Vehicle System Failures: Total number of failures that occur during revenue service, deadheading, and layovers. A failure is classified as the breakdown of either a major or minor element of the revenue vehicle's mechanical system.

Safety Incident: A collision, derailment, fire, hazardous material spill, act of nature, evacuation, or an event not otherwise classified occurring on transit right-of-way, in a transit revenue facility, in a transit maintenance facility, or involving a transit revenue vehicle and meeting established NTD thresholds.

FDOT District Offices Modal Development (OMD)

The Florida Department of Transportation is decentralized in accordance with legislative mandates. Each of the seven districts is managed by a District Secretary. The districts vary in organizational structure; however, each district, except for the Turnpike, District 8, has an Office of Modal Development (OMD), managed by a District Modal Development Manager. OMD organizational structures also vary from district to district, but each district OMD is responsible for transit, aviation, rail and seaport functions within their districts.

District OMDs coordinate with the FDOT Central Office in policy, planning and technical issues, but they are more involved in the day-to-day administration of FDOT's transit programs at the local level. They work more directly with local governments, transit agencies and Metropolitan Planning Organizations (MPOs) to address transit issues and programs specific to their districts. District OMD staff often represent the FDOT at local transit meetings and serve on local project committees. For information on FDOT transit activities in your district please contact your district PTO at the following addresses and phone numbers:

District	District Phone	Transit Agencies
1	(863) 519-2300 1-800-292-3368	Breeze Transit (Sarasota County); Collier Area Transit; FDOT District 1 Vanpools (Commute Connector); Lakeland Area Mass Transit District (CitrusConnection); Lee County Transit (LeeTran); Manatee County Area Transit (MCAT)
2	(904) 360-5457 1-800-207-8236	Jacksonville Transportation Authority (JTA); Regional Transit System (RTS, Gainesville); St. Johns County (The Sunshine Bus Co.)
3	(850) 330-1205 1-888-638-0250	Bay County TPO (Bayway Transit); Escambia County Area Transit (ECAT); Okaloosa County (EC Rider); City of Tallahassee (StarMetro)
4	(954) 777-4110 1-866-336-8435	Broward County Transit (BCT); Indian River County; Martin County; Palm Beach County (Palm Tran); St. Lucie County (ART); South Florida Regional Transportation Authority (Tri-Rail)
5	(386) 943-5479 1-800-780-7102	Central Florida RTA (Lynx); Lake County (LakeXpress); Ocala (SunTran); Space Coast Area Transit; Volusia County (Votran); SunRail (FL Department of Transportation)
6	(305) 470-5349 1-800-435-2368	Miami-Dade Transit (MDT); South Florida Regional Transportation Authority (Tri-Rail)
7	(813) 975-6060 1-800-226-7220	Citrus County Transit; Hillsborough Area Regional Transit Authority (HART); Pinellas Suncoast Transit Authority (PSTA); Pasco County Public Transportation; THE Bus (Hernando County Transit)

